

2023 IHPI MEMBER FORUM

**CULTIVATING  
CONNECTIONS,  
COLLABORATION  
& COMMUNITY**



**April 17**

**2:30 – 5:00 pm**  
**NCRC Dining Hall**

# Agenda

**2:30 pm** IHPI Year in Review

**3:00 pm** Looking Ahead: Member Input

**3:30 pm** Building Community by Design: CHOP Workspace Pilot Project

**4:00 pm** Policy Impact Awards

**4:15 pm** Networking & Refreshments



# **Year in Review**



# Institute Leadership Team Transitions

THANK YOU!



**Ken Langa**

Internal Medicine  
& VA

WELCOME!



**Ravi Anupindi**

Business



**Donald Likosky**

Cardiac Surgery



**Sameer Saini**

Internal Medicine  
& VA

# Institute Leadership Team



**Anupindi**  
Business



**Broglio**  
Kinesiology



**Buis**  
Family  
Medicine



**Englesbe**  
Surgery



**Hawley**  
Internal  
Medicine



**Likosky**  
Cardiac  
Surgery



**Malani**  
Internal  
Medicine



**Manojivich**  
Nursing



**Nallah**  
Dentistry



**Saini**  
Internal  
Medicine & VA



**Shahinian**  
Urology



**A. Waljee**  
Internal  
Medicine



**J. Waljee**  
Surgery



**Yakusheva**  
Nursing

# Highly Productive Interdisciplinary Membership



**676**  
members

654 faculty  
22 scholars

**42** New members  
in FY22

IHPI unites faculty across **15 U-M Schools & Colleges** on the Ann Arbor campus, and several units on the Flint and Dearborn campuses to address today's most pressing health and healthcare priorities:



**Aging & Medicare**



**\$1.3B**  
in active HSR  
funding

**225**  
new FY22 HSR  
grant awards

A background graphic consisting of a network of interconnected nodes and lines. The nodes are represented by small circles of varying shades of blue and teal, connected by thin, light blue lines. The overall pattern is abstract and suggests a digital or social network.

# **Reconnecting Our IHPI Community (in person!)**

---

# 2023 IHPI Tailgate

**SAVE THE DATE:**  
September 23

**M vs R**





# Coffee & Donuts with IHPI



# 2023 Director's Lecture

2023 IHPI DIRECTOR'S LECTURE

## The Future of Medicare & Healthcare Reform

**A conversation with Michael Chernew, Ph.D.**

March 22, 2023 | 2:30–4:00pm

Stephen M. Ross School of Business, Robertson Auditorium



# Engaging with IHPI

Early Career  
Faculty  
Advisory  
Council

Policy  
Engagement

Communications  
& Media  
Relations

Data &  
Methods Hub

Strategic  
Initiatives

Education &  
Career  
Development

Grant  
Development  
Services

Philanthropy/  
Development  
Team

A background graphic consisting of a network of light blue lines connecting various circular nodes of different sizes, creating a web-like structure. The nodes are scattered across the frame, with some larger than others, and the lines are thin and light blue. The overall color palette is a gradient of light blues and teals.

# **Early Career Faculty Advisory Council**



# Early Career Faculty Advisory Council



**Bell**  
Nursing,  
*Chair*



**Thompson**  
Cardiac Surgery,  
*Chair Elect*



**Burns**  
Nursing



**Coe**  
Pharmacy



**Coughlin**  
Psychiatry



**DeJonckheere**  
Family  
Medicine



**Herrel**  
Urology



**Hoffman**  
Nursing



**Manzor  
Mitrzyk**  
Pharmacy



**Reeves**  
Pediatrics



**Robinson-  
Lane**  
Nursing



**Shuman**  
Nursing



**Smith**  
Public Health

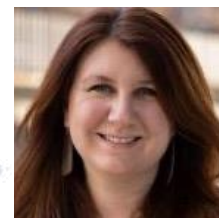


**Veenstra**  
Internal  
Medicine

# 2023 Emerging Scholars Exchange Program



Lauren Gerlach



Sarah Reeves



Sharad Wadhvani



Chén Kenyon



Penn LDI  
LEONARD DAVIS INSTITUTE of HEALTH ECONOMICS

Presentation: Monday, May 1  
1:30 – 3:00 pm ET

Presentation: Thursday, April 20  
3:00 – 4:30 pm ET

# Inaugural Sandy-Hassmiller Award Recipients

New award providing seed funding for IHPI early career faculty to help catalyze innovative research



**Real-World Use of Systemic Therapies for Patients with Advanced Thyroid Cancer**

Debbie Chen, Internal Medicine



**Improving Pediatric Primary Care Vision Screening to Decrease Avoidable Blindness**

Olivia Killeen, Ophthalmology

**Next Call for Applications:  
May 16–July 14**

# Early Career Faculty Writing Accountability Groups

*New in 2022–2023*



Groups of 3–4  
faculty met  
monthly for six  
months

*“This has been a **really helpful** exercise for me, and I think has **increased my productivity**. It’s nice looking at the spreadsheet periodically and seeing that I **actually have made progress.**”*

Interested in starting a group?

Contact Jodie Moore



# IHPI Community Volunteer Day

sponsored by the Early Career Faculty Advisory Council

**Friday, June 16**

**4:00–6:30 pm**

*Park location TBD*

All IHPI members and their families are welcome to participate! Dinner will be served.



Partnership with

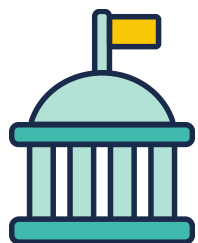


to support Ann Arbor  
Parks & Recreation

A background network diagram consisting of a grid of light blue lines connecting various circular nodes. The nodes are arranged in a somewhat irregular pattern, with some nodes being larger than others. The overall color scheme is a gradient of light blues.

# **Policy Engagement and External Relations**

---



## **IHPI Policy Engagement Team Helps Members Inform Local, State, and Federal Policy**



Disseminate policy-relevant findings



Connect members to policymakers and key stakeholders



Nominate for national advisory committees



Develop targeted one-pagers and issue briefs

***New this year***

**IMPACT ACCELERATOR PROGRAM:  
Policy and Communications Training**

**May 16–18, 2023**

**Skill-building sessions on:**

- navigating the policy & communications landscape
- framing & “translating” research findings
- identifying and engaging with media & policy audiences to achieve greater health policy impact



**TRANSLATE.**



**ENGAGE.**



**ELEVATE.**

# Impact Accelerator Cohort



**Barnes**  
Internal  
Medicine



**Bauer**  
Public  
Health



**Becker**  
Internal  
Medicine



**Broglio**  
Kinesiology



**Chen**  
Internal  
Medicine



**Creary**  
Public  
Health



**Elafros**  
Neurology



**Mahmoudi**  
Family  
Medicine



**Oshman**  
Family  
Medicine



**Perumalswami**  
Internal  
Medicine



**Robinson-  
Lane**  
Nursing



**Smith**  
Pharmacy



**Stroumsa**  
Ob-Gyn

## RESEARCH SEMINAR SERIES

# Experiences and best practices for policy and communications engagement

**May 18<sup>th</sup> | 2:00–3:30 pm**

NCRC Building 10 Research Auditorium  
Livestreaming will be available

### MODERATOR



**Renu Tipirneni**

### PRESENTERS



**Chad  
Ellimoottil**



**Chris  
Friese**



**Preeti  
Malani**



**Emily  
Martin**

# Policy Sprints

18 rapid analyses of policy-relevant topics completed since launch in 2018



**Open Call for Proposals: Due May 22, 2023**



## Policy Sprints

# ***The Cancer Continuum***



Find out more: [michmed.org/eVRKX](https://michmed.org/eVRKX)

**M** | INSTITUTE FOR  
HEALTHCARE POLICY & INNOVATION  
UNIVERSITY OF MICHIGAN

**M** | ROGEL CANCER CENTER  
UNIVERSITY OF MICHIGAN HEALTH

A background network diagram consisting of a grid of light blue lines connecting various circular nodes. The nodes are arranged in a somewhat irregular pattern, with some nodes being larger than others. The overall color scheme is a gradient of light blues.

# **Strategic Initiatives**





# Telehealth Initiative Leadership Transition



**THANK YOU!**

**Chad Ellimoottil**

Medical Director of Virtual Care for  
University of Michigan Medical Group



**WELCOME!**

**Laurie Buis**

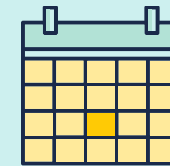
Faculty Lead as of  
January 1, 2023

# Telehealth Research & Policy Initiative and Network



Join our growing community of telehealth, e-health, digital health, mobile health, and other health IT researchers to elevate shared resources and amplify impact.

Interested in joining? Contact Emma Steppe



**Coming this summer:**

Telehealth Expert Talks

**Coming this fall:**  
Networking event

# National Poll on Healthy Aging Leadership Transitions



**THANK YOU!**  
**Preeti Malani**  
Senior Advisor

New role as JAMA Deputy Editor and Editorial Director for Equity for JAMA and the JAMA Network journals



**Jeff Kullgren**  
Director



**Erica Solway**  
Deputy Director



**Scott Roberts**  
Associate Director

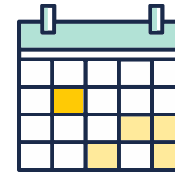
# National Poll on Healthy Aging



**53**  
reports



**7 waves** of poll data available  
for public use through ICPSR



**Coming soon:**  
How-to webinar on  
using poll data



Collaboration with more  
than **50 IHPI members**



**26 peer reviewed publications** and  
**9 academic blog posts** featuring poll data



**Strong partnership** with  
**AARP** **M** | MICHIGAN MEDICINE



New partnership with the  
**Michigan Health Endowment Fund**  
to develop a Michigan-focused poll



# MICHIGAN PROGRAM ON VALUE ENHANCEMENT

## **New MPrOVE Faculty Fellowship Program**

Call for applications: April 17 – May 12



### **VALUE-BASED PROJECTS**

Candidates will submit proposals to:

- Address and research low-value care
- Advance a project concept from idea to pilot implementation over one year
- Build relationships with health system partners, IHPI members and learners



### **FUNDING**

Fellows will receive \$25,000 to support faculty and staff effort, or other resource needs



### **COLLABORATIVE SUPPORT**

MPrOVE team with expertise in appropriateness and de-implementation will provide consultation and support

# Workforce Diversity & Health Equity Initiative

## Working Group Co-Leads

**Recruiting & Retaining  
Diverse Leaders**



**Jade  
Burns**



**Tom  
Valley**

**Career Advancement &  
Leadership Development**



**Ebbin  
Dotson**



**Antonios  
Koumpias**

**Inequities in  
Care Delivery**



**Yee  
Lu**



**Sheria  
Robinson-Lane**

# Research Interest Groups

## Oral Health Research & Policy



Romesh  
Nalliah

- Held Research Seminar in February 2023 on oral health policy
- Working with Dental School Leadership to foster stronger connections with IHPI

**Interested in joining?** Contact Erica Solway

## Community Engaged Health Policy Research



Susan  
Goold

- Discuss ongoing work and best practices for community engaged research
- Provide feedback on grant proposals focused on community engagement
- Collaborate on publications

**Interested in joining?** Contact Jason Wolfe

A background network diagram consisting of a grid of light blue lines connecting various circular nodes. The nodes are arranged in a somewhat irregular pattern, with some nodes being larger than others. The overall color scheme is a gradient of light blue to teal.

# **Education & Career Development**

---



# **Recognizing Outstanding Volunteers**

**Thank you to all of our IHPI members who volunteered their time to support our Education & Career Development programs.**

# **44**

**IHPI members  
volunteered their  
time in support of  
Education & Career  
Development  
programs during  
Academic Year  
2021–2022**

# Thank You!

- Laurie Buis
- Noelle Carlozzi
- Lynae Darbes
- Samir Gadepalli
- Sarah Hawley
- Sarah Reeves
- Jeremy Sussman
- Mike Thompson
- Jennifer Waljee
- Lauren Wallner

- Andrew Admon
- Mousumi Banerjee
- Sung Won Choi
- Sarah Clark
- Colin Cooke
- Ebbin Dotson
- Chad Ellimoottil
- Karen Farris
- Debbie Gipson
- Jennifer Griggs
- Timothy Guetterman
- Megan Haymart
- Lindsey Herrel
- David Hutton
- Yun Jiang
- Claire Kalpakjian
- Amy Kilbourne
- Anna Kirkland
- Anna Kratz
- Jeff Kullgren
- Ken Langa
- Deb Levine
- Helen Levy
- Lisa Kane Low
- Michael Mathis
- Donovan Maust
- Brahmajee Nallamothu
- Lauren Oshman
- Maria Papaleontiou
- Aaron Parzuchowski
- Minal Patel
- Ananda Sen
- Renu Tipirneni
- Tom Valley

# Upcoming Programs

## SUMMER 2023

---

**Student Lunch & Learn sessions** are in-person!

**K-Writing Workshop**  
in partnership with MICHR

Interested in joining  
either program?

Contact Stephanie Jared

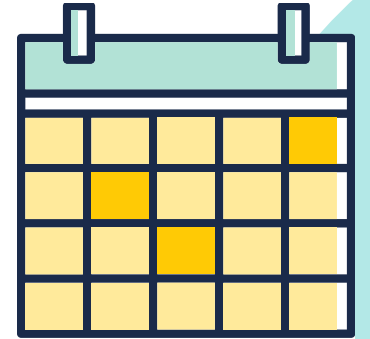
## FALL 2023

---

**R01 Boot Camp:**  
Applications due May 15

**Career Development “Office Hours”** including themes such as:

- How to develop teams
- Mentoring 101
- Transitioning to Associate Professor



# Sharing Our IHPI Staff Expertise

Skill-building sessions open to all IHPI faculty and research staff

## Twitter 101



Kara  
Gavin

## Designing Effective Slides



Emily  
Smith

## Medicare Data 101



Kathryn  
Ashbaugh

## Writing a Biosketch



Wendy  
Lombard

## Visual Abstracts 101



Kara  
Gavin

## Creating a Policy Brief



Eileen  
Kostanecki



Lauren  
Hutchens



Emily  
Smith



Sarah  
Wang

A background network diagram consisting of a grid of light blue lines connecting various circular nodes. The nodes are arranged in a somewhat irregular pattern, with some nodes being larger than others. The overall color scheme is a gradient of light blue to teal.

# **Philanthropy**

---

# IHPI Development Team



**THANK YOU!**

**Vince Cavataio**

*Director of Development,  
Frankel Cardiovascular Center*



**WELCOME!**

**Nancy Short**



**Laura Boudette**



**Joe Piffaretti**

# Generous Gifts of Support

## Clinician Scholars Program



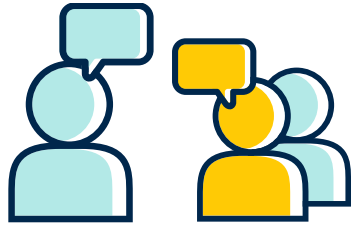
Gary and  
Wendy Kaplan

## Future Strategic Priorities



Mike and  
Trina Johnsa

# Additional Philanthropic Updates



IHPI Philanthropy Council outreach began last year. First meeting to be held in November 2023.



Workshops to help IHPI faculty members partner with U-M Development team to expand philanthropic opportunities.

**Questions?**

Contact Nancy Short



A background network diagram consisting of a grid of light blue lines connecting various circular nodes. One node in the upper-left quadrant is highlighted with a larger, white-outlined circle.

**Questions?**

---

The background features a network diagram with various nodes and connecting lines. One node in the upper-left quadrant is highlighted with a larger, hollow circle. The text "Looking Ahead" is centered in a bold, dark blue font, with a white horizontal line underneath it.

# Looking Ahead

---

# Five-Year Review

## SPRING 2022

IHPI five-year review report  
(2017–2022) submitted to Dean Runge

## JUNE 2022

External review committee met with  
14 stakeholders, surveyed 28 others

## Review Committee



**L. Ebony  
Boulware**  
Duke University



**Ganesh S.  
Palapattu**  
University of  
Michigan



**Toni Villarruel**  
University of  
Pennsylvania

# Five-Year Review

## FAVORABLE REVIEW FROM EXTERNAL COMMITTEE

*“Return on investment has surpassed expectations”*

*“IHPI has been transformative on campus”*

## SOME KEY RECOMMENDATIONS ALREADY UNDERWAY

*“Greater emphasis on policy training”*

*“Opportunity to expand collaboration with other Centers and Institutes”*

---

## SOME CAUTIONARY NOTES

*“Inclusiveness should not necessarily preclude focus”*

*“Establish goals and clarity of the mission”*

# Strategic Planning Process

Worked with Bridgeport Consulting to solicit input from stakeholder groups.

Some key themes and priority areas that have emerged:



## STAKEHOLDER CONVERSATIONS

# What Do You Value Most About the IHPI Community?

Support for early career faculty

Shared desire to have a meaningful impact

Gateway to the broader campus community

Access to people who make me a better researcher

Multi-disciplinary perspectives

**Spirit of  
community and  
collaboration:  
a second home**



**FOR DISCUSSION:**  
**In a hybrid world,  
how can we build  
upon and cultivate  
IHPI's strong sense  
of community and  
collaboration?**

What can  
**the Institute** do?

---

What can  
**you personally** do?

# Table Talk





# Rethinking Space to Foster Community

- All are welcome at NCRC!
- Visit IHPI website for list of touchdown and team spaces



A background graphic consisting of a network of light blue lines connecting various circular nodes of different sizes, creating a web-like structure. The nodes are scattered across the frame, with some larger than others, and the lines are thin and light blue.

# **Building Community by Design: CHOP Workspace Pilot Project**



# CHOP Redesign

Improving Workplaces  
Through Intentionality



CENTER FOR  
HEALTHCARE  
OUTCOMES &  
POLICY



IHPI Member Forum

April 17<sup>th</sup>, 2023

---

Mitchell Mead, EDAC, LEED AP, WELL AP

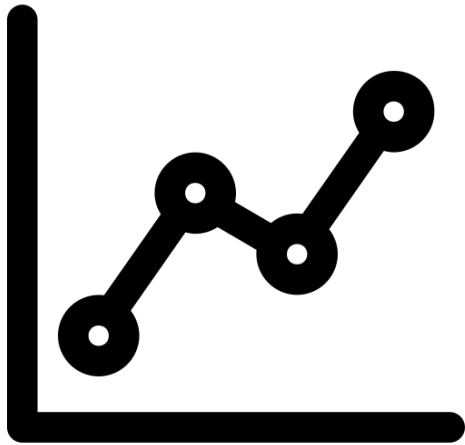
Health in Design Fellow

Center for Healthcare Outcomes & Policy

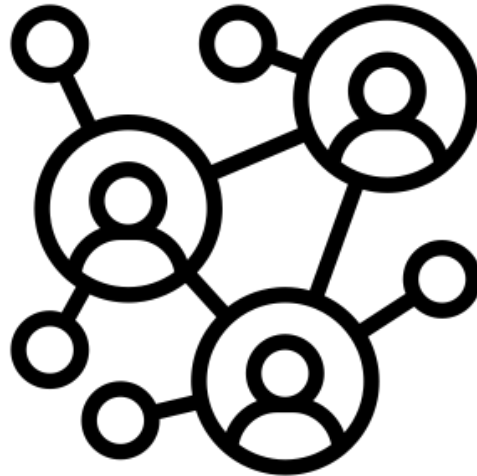
Institute for Healthcare Policy and Innovation

University of Michigan

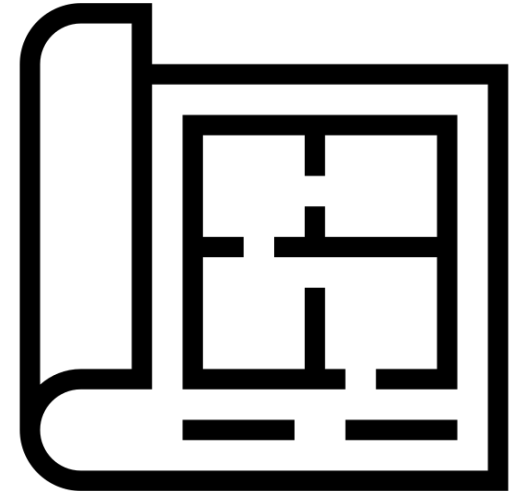
# Who We Are



Health Services and  
Policy Research



**72** Faculty, Fellows  
& Staff



**7,200** Square Feet of  
Office Space

# Our Motivation



# Our Motivation



**How can our space serve the needs of our community?**

# A Trend Toward Adaptability

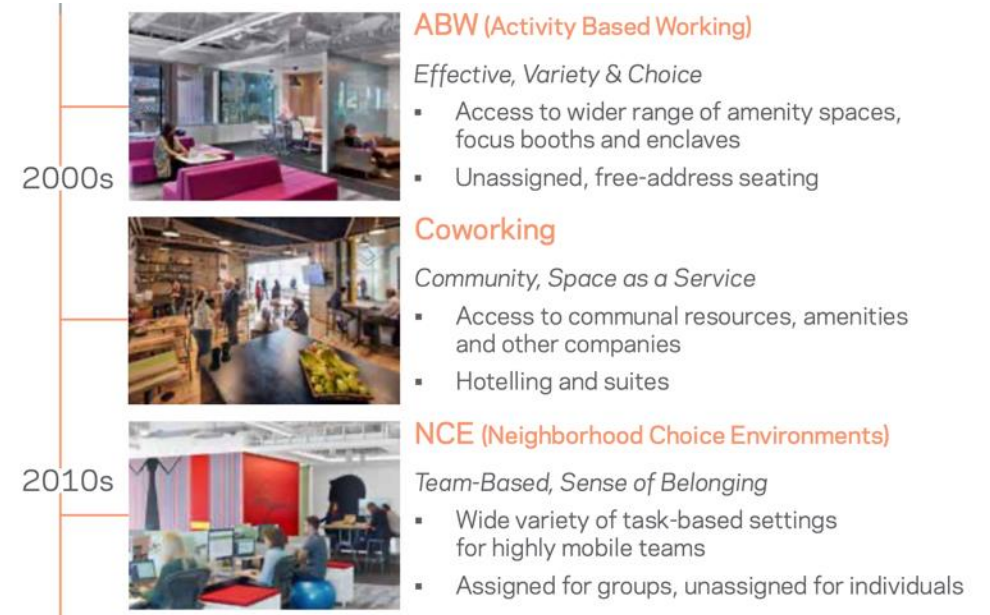
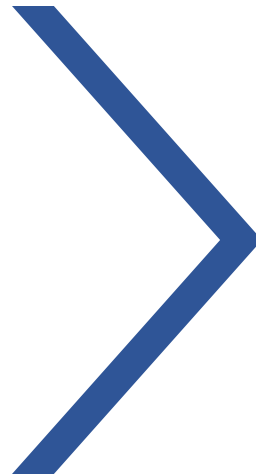
## Workplace Evolution



Individual  
Task Work  
Uniform

# A Trend Toward Adaptability

## Workplace Evolution

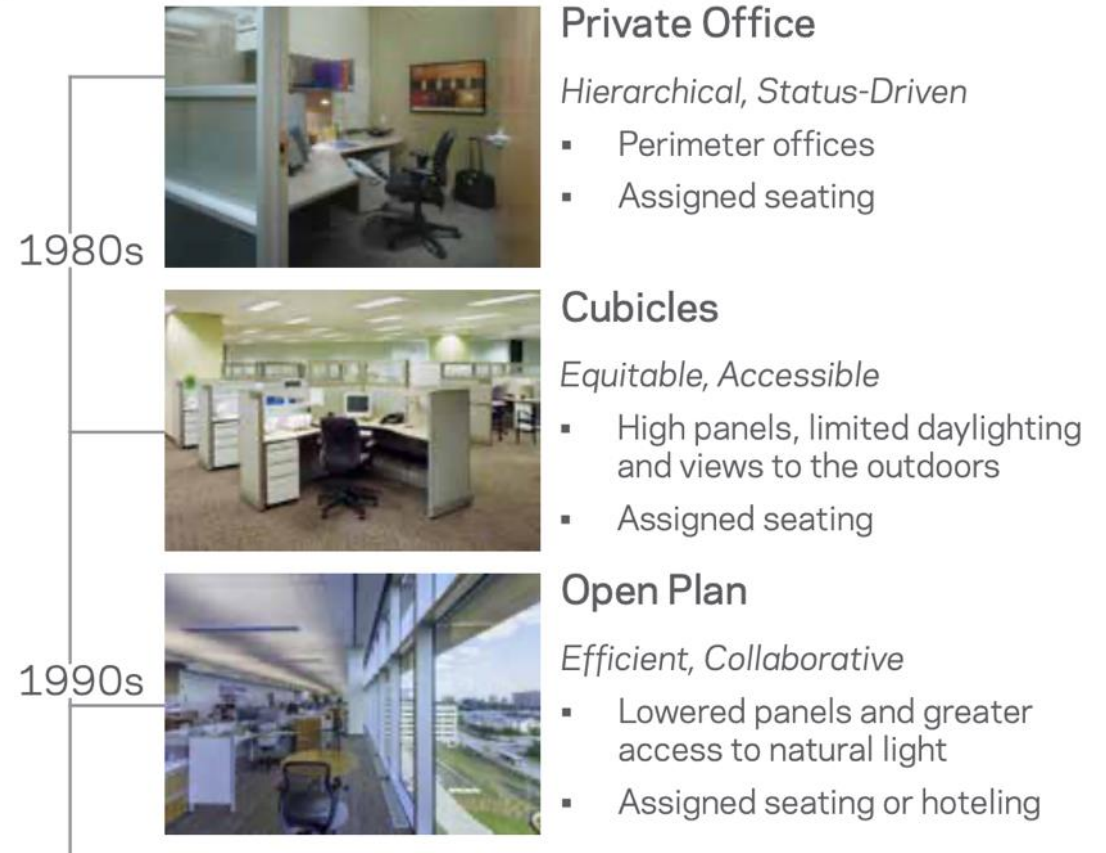


Individual  
Task Work  
Hierarchical

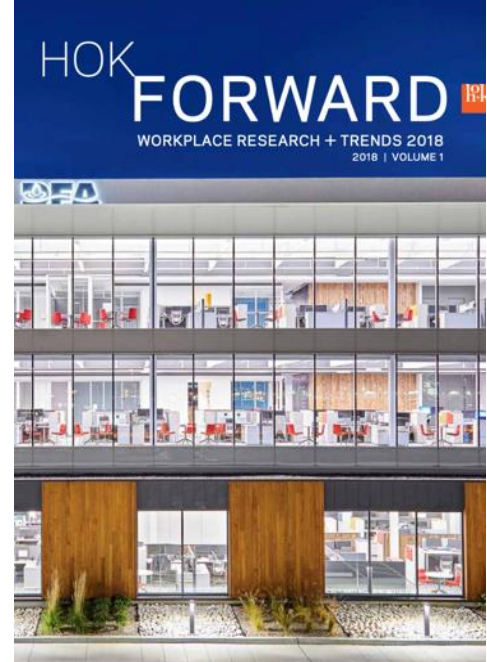
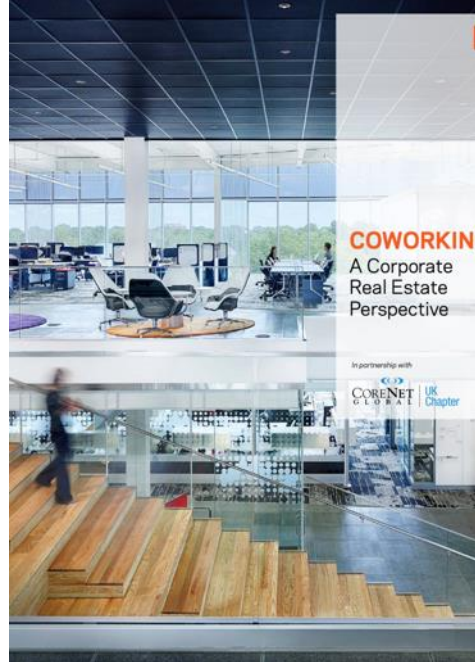
Collaboration  
Multipurpose  
Identity



# Where is CHOP?



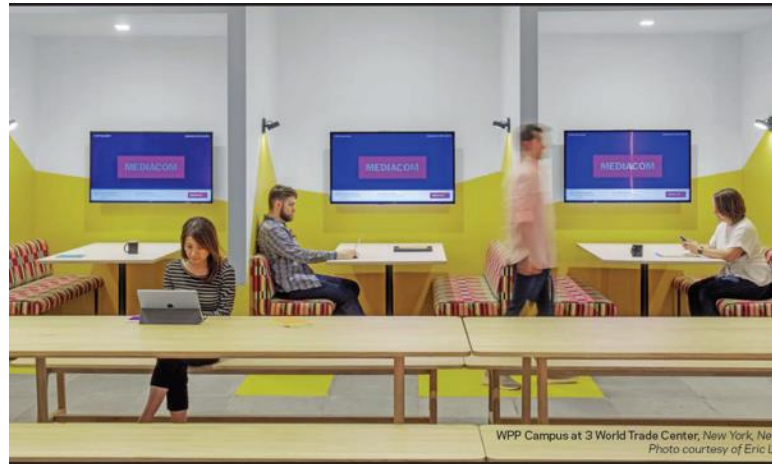
# What Makes a Good Workplace?



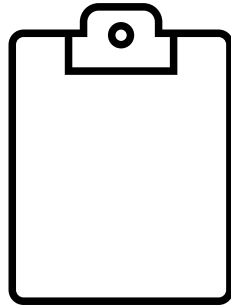
# What Makes a Good Workplace?



**Collaborative**  
**Inclusive**  
**Hybrid**  
**Natural Light**  
**Signature**  
**Flexible**  
**Resourced**  
**Comfortable**  
**Safe**  
**Connected**  
**Caffeinated**



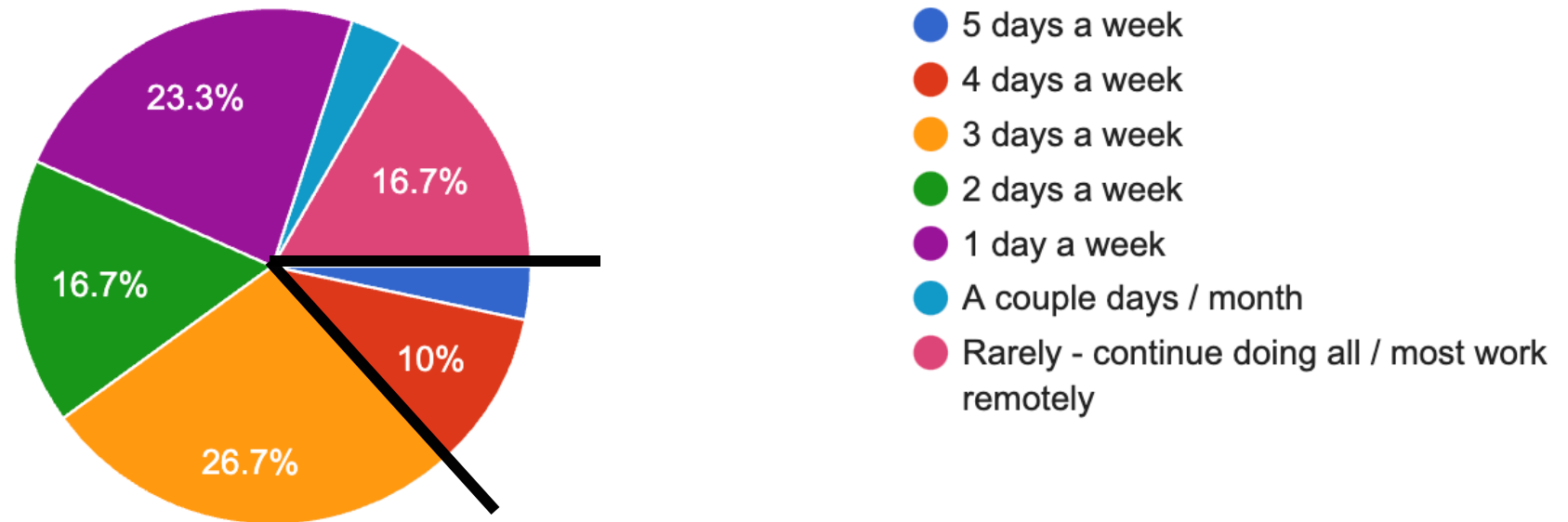
But Will This Work for Us?



# We Want Hybrid...

Thinking about your ideal scenario over the next 1-2 years (assuming all COVID restrictions lift), on average, how often would you want to come to CHOP In-Person?

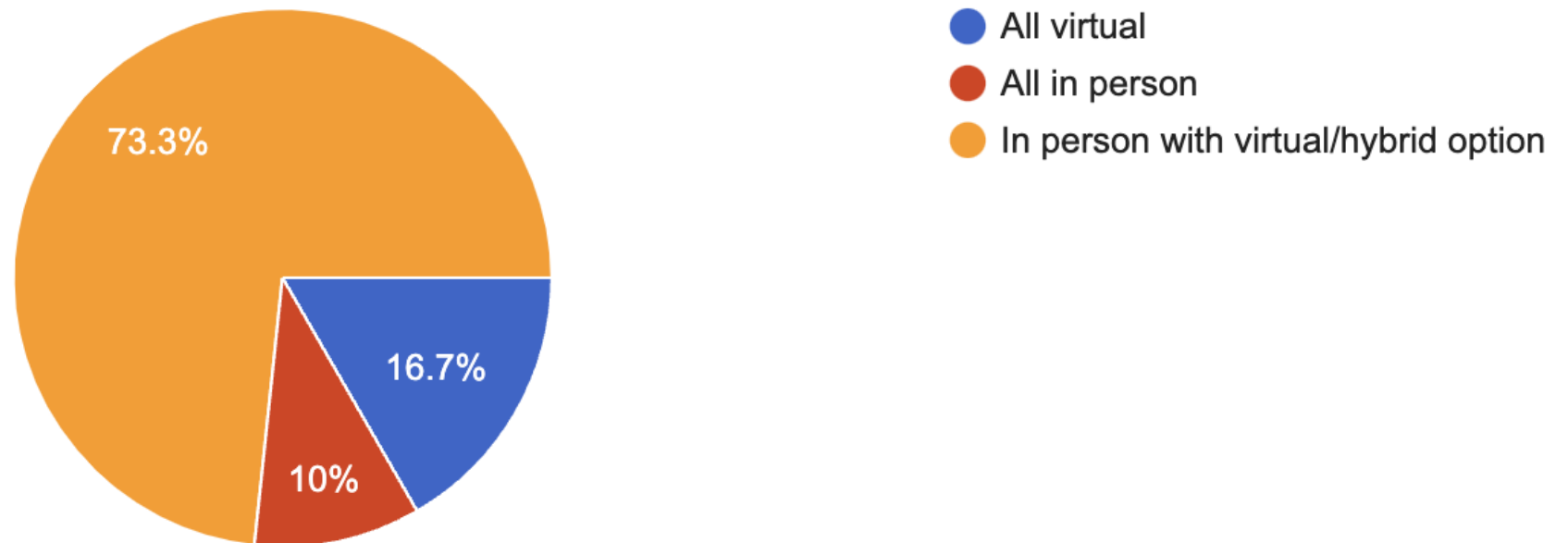
30 responses



# We Want Hybrid...

What format do you prefer for works-in-progress sessions?

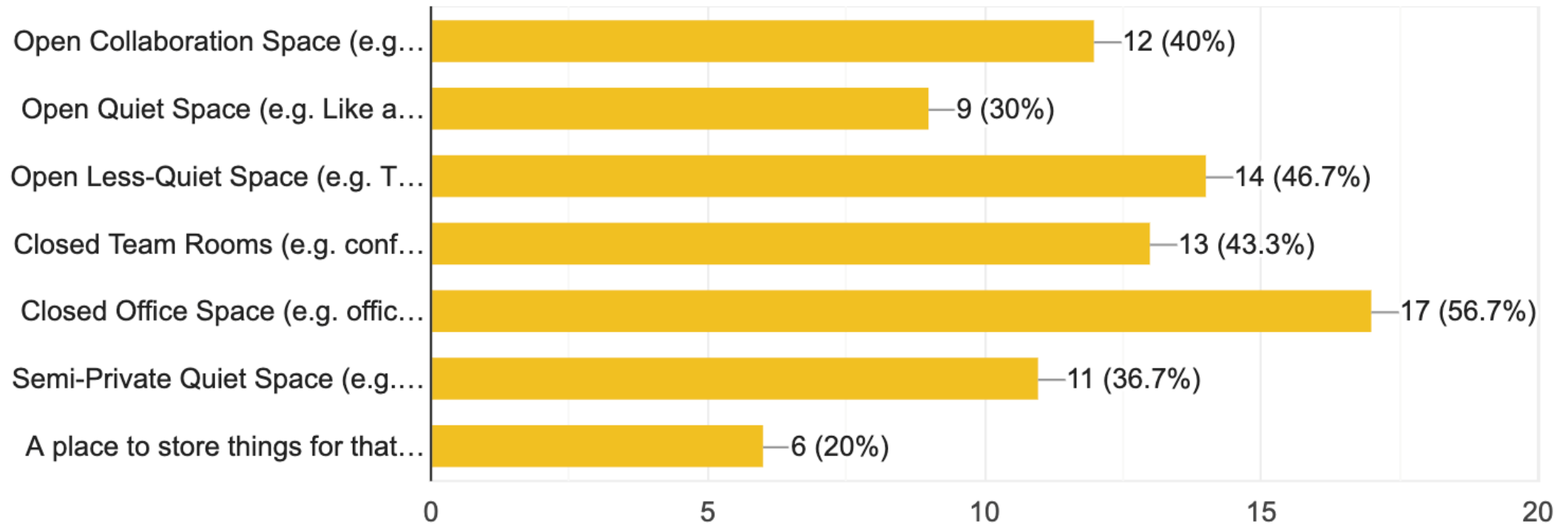
30 responses



# We have Neurodiverse Needs...

When coming to CHOP In-Person, what type of space would best meet your needs? (Check all that apply)

30 responses

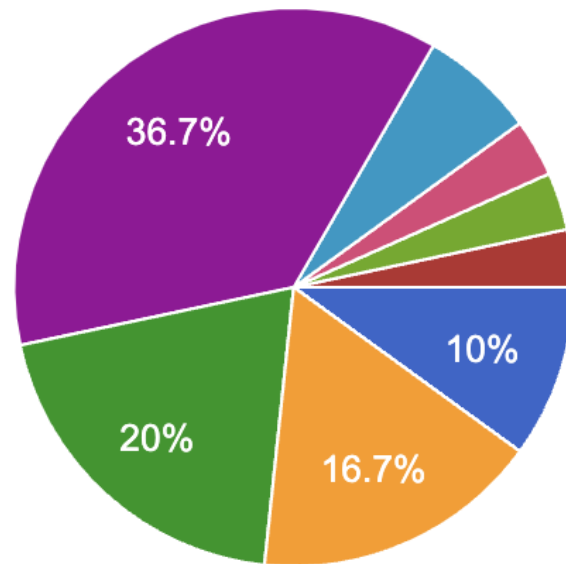




# We Want Diverse Programming...

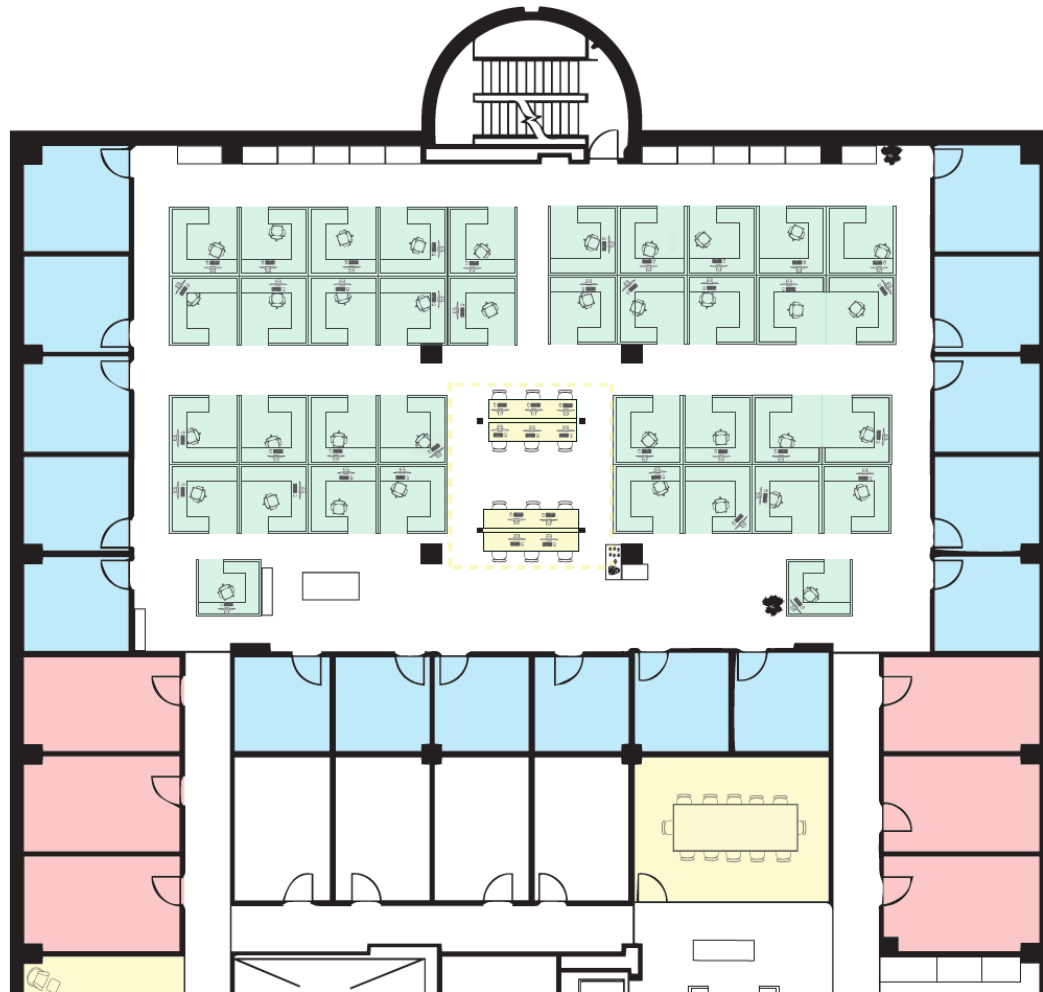
What is most important to you in CHOP programming?

30 responses



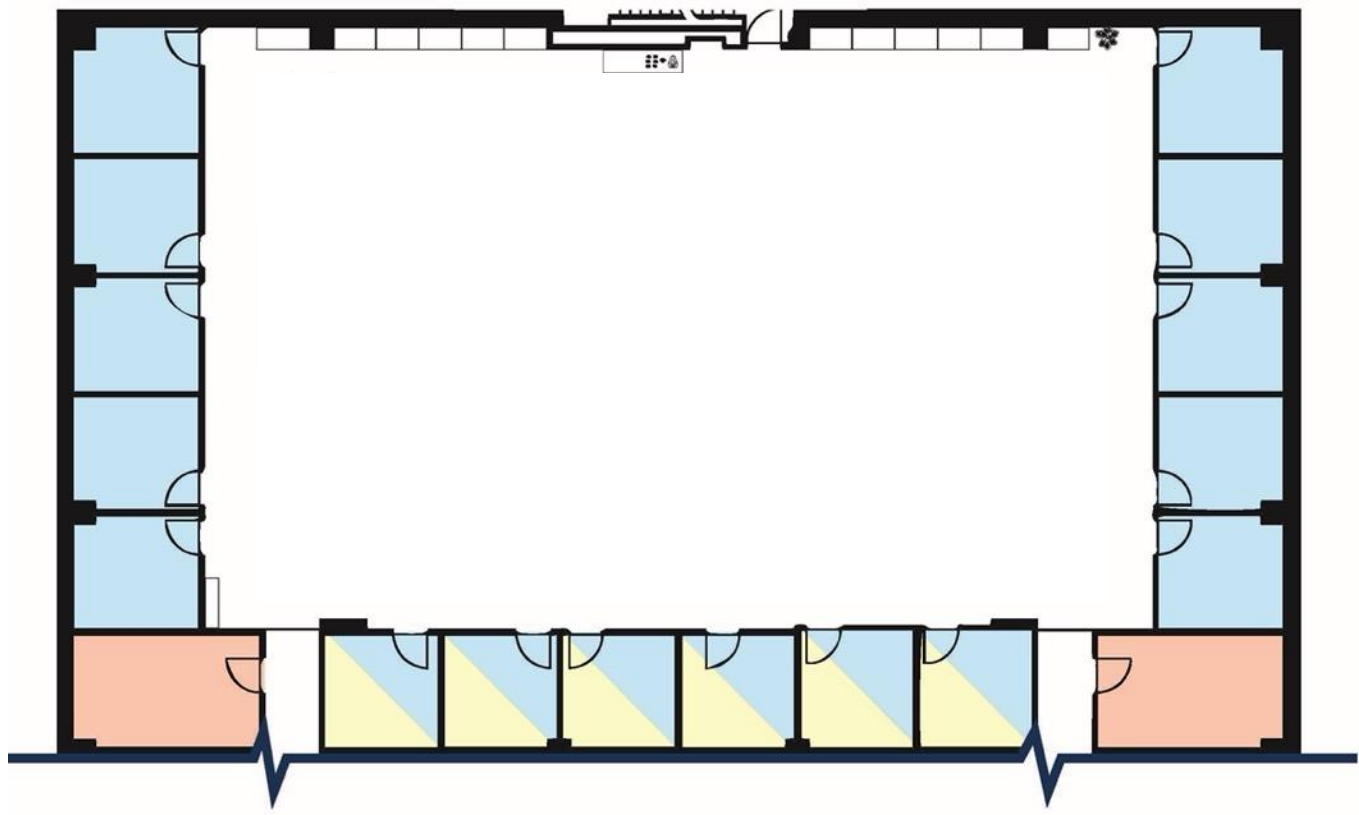
- Get feedback on my work
- Give feedback to others
- Meet potential collaborators or mentors
- Learn new methodologies or content areas
- Connect with other members
- All of the above!
- all of the above
- Learn new methodologies or content a...
- I really wanted this to be a select all q...

# Our Current Floor Plan



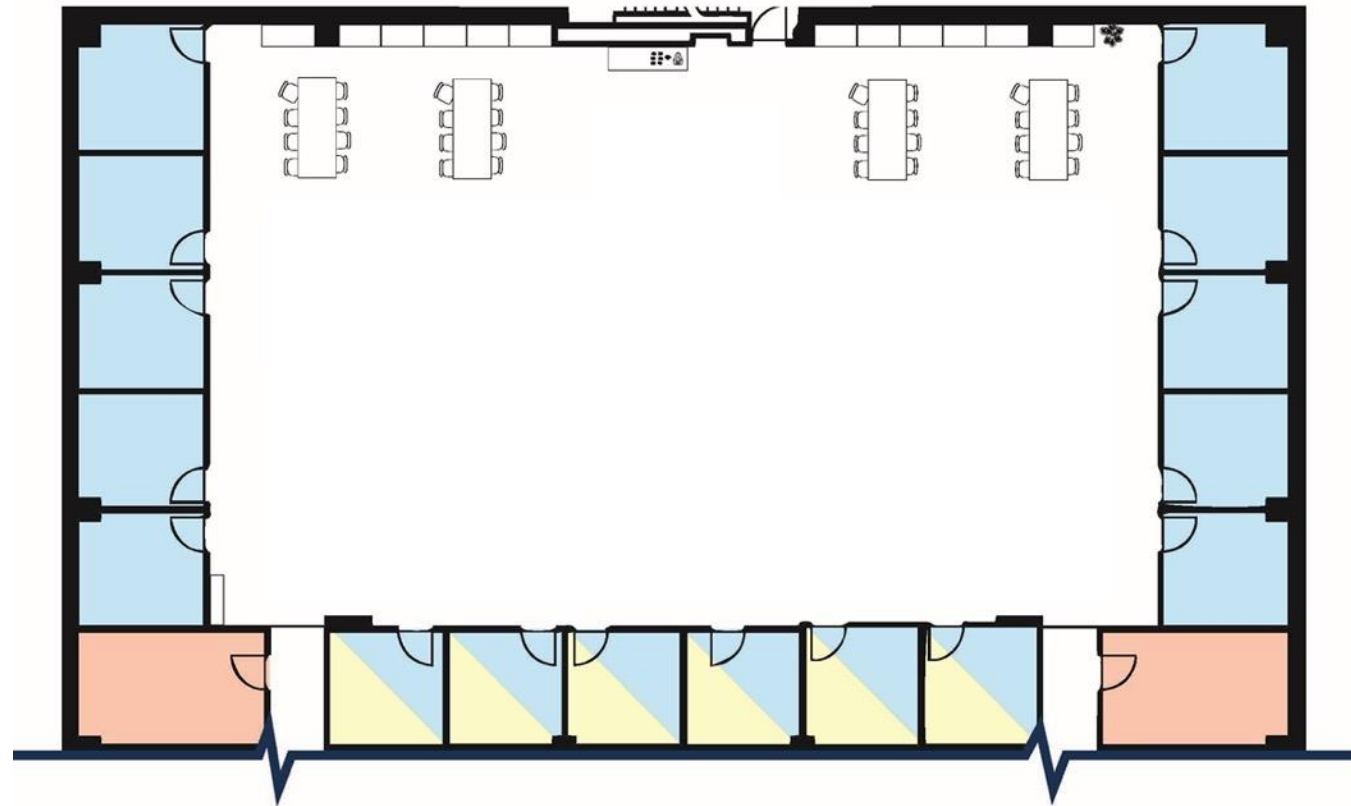
Thought Experiment...

# Applying Neurodiversity to Our Space...



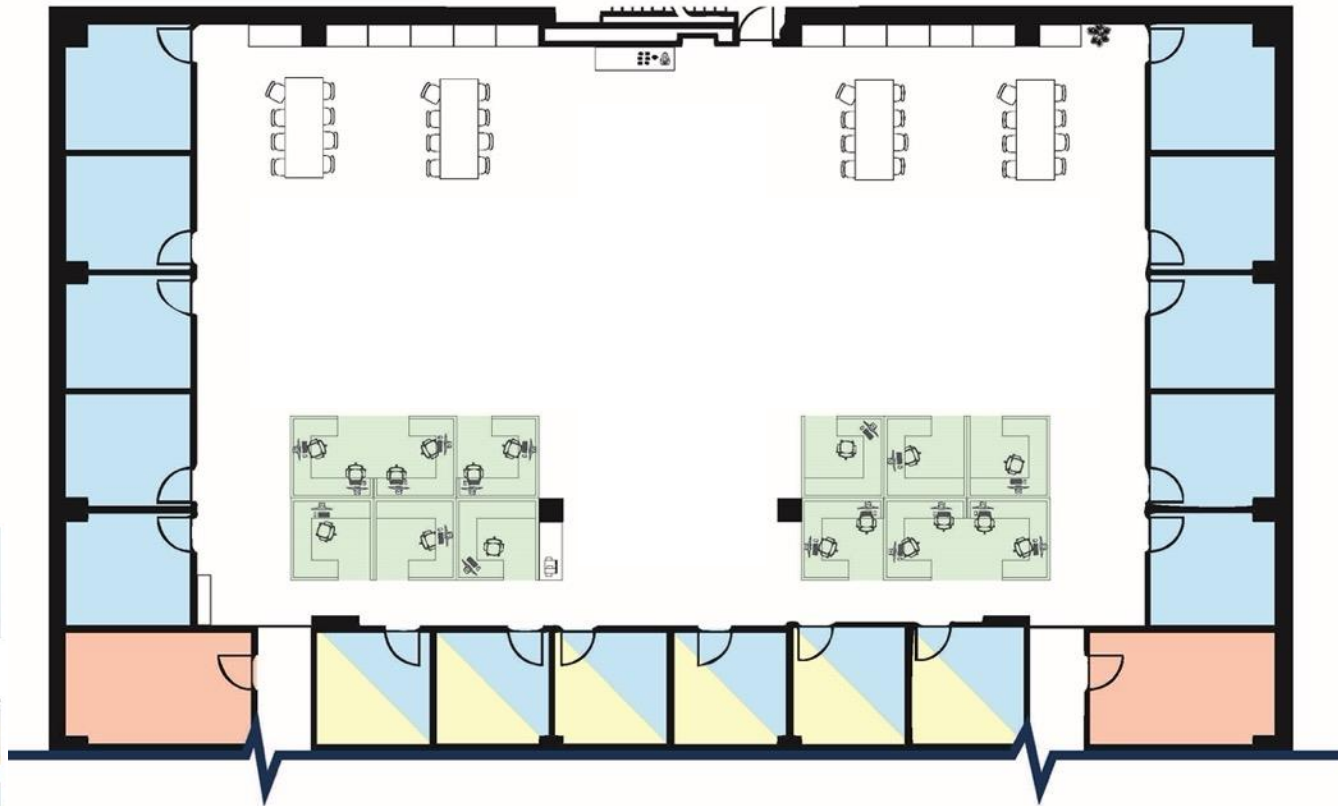
# Applying Neurodiversity to Our Space...

*Space to Aggregate (Recode Lab)*

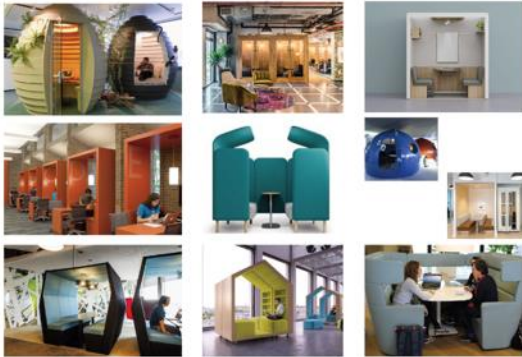


# Applying Neurodiversity to Our Space...

*Space to Aggregate (Recode Lab)*



*Space to Silo (Cubes / Booths)*

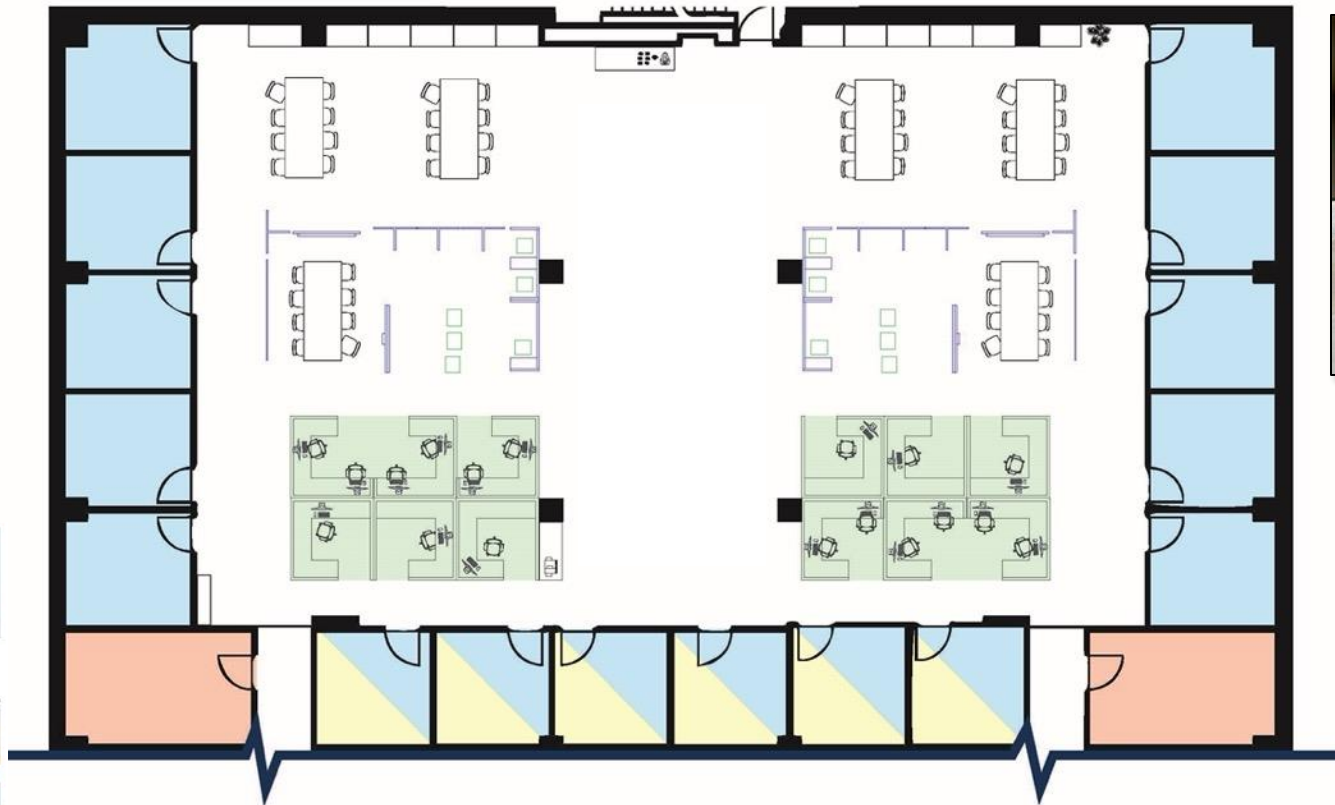


# Applying Neurodiversity to Our Space...

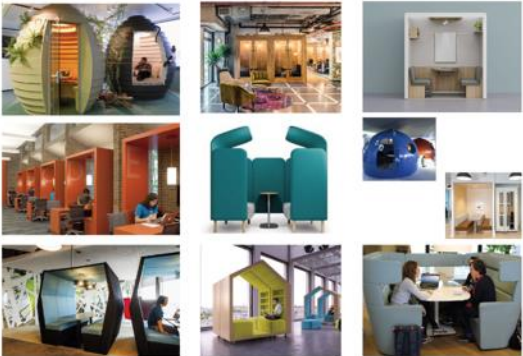
*Space to Aggregate (Recode Lab)*



*Space to Interact (Starbucks)*



*Space to Silo (Cubes / Booths)*



# Applying Neurodiversity to Our Space...

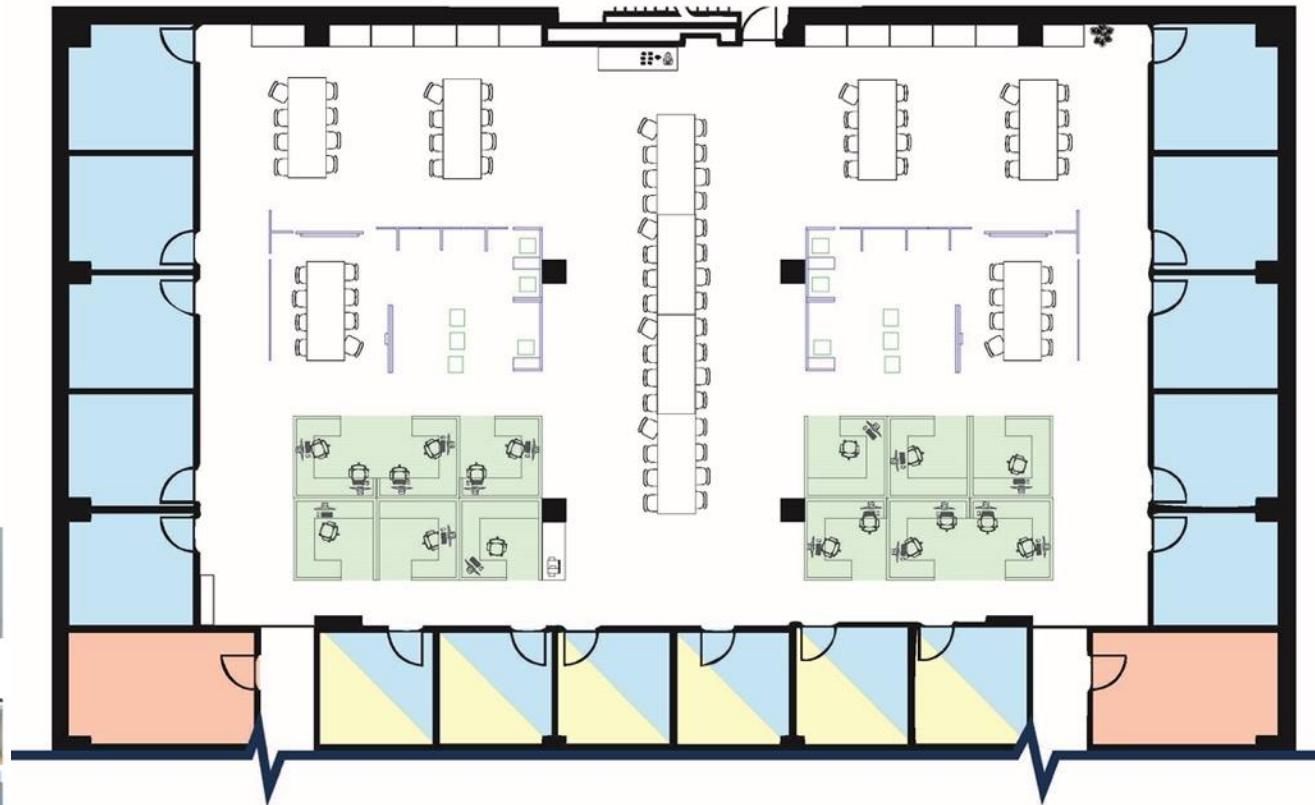
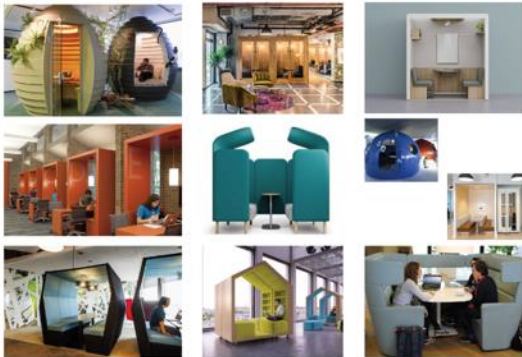
*Space to Aggregate (Recode Lab)*



*Space to Interact (Starbucks)*



*Space to Silo (Cubes / Booths)*

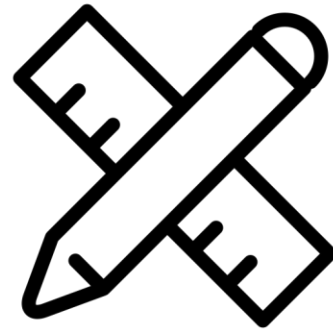


*Space to Conference*





# Redesign To Date



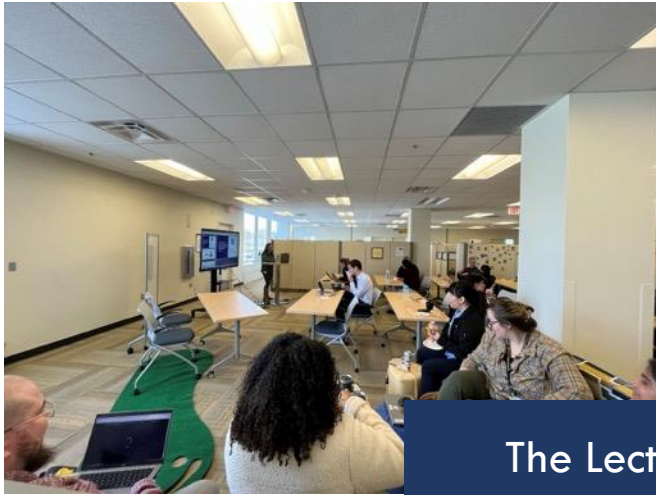
# New Central Gathering Space



# New Central Gathering Space



# New Central Gathering Space



The Lecture



The Amphitheater



The Workshop

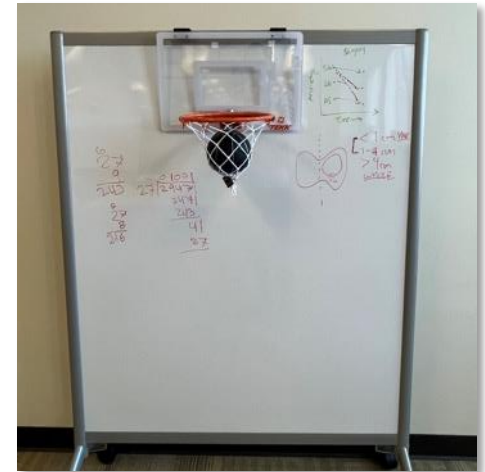
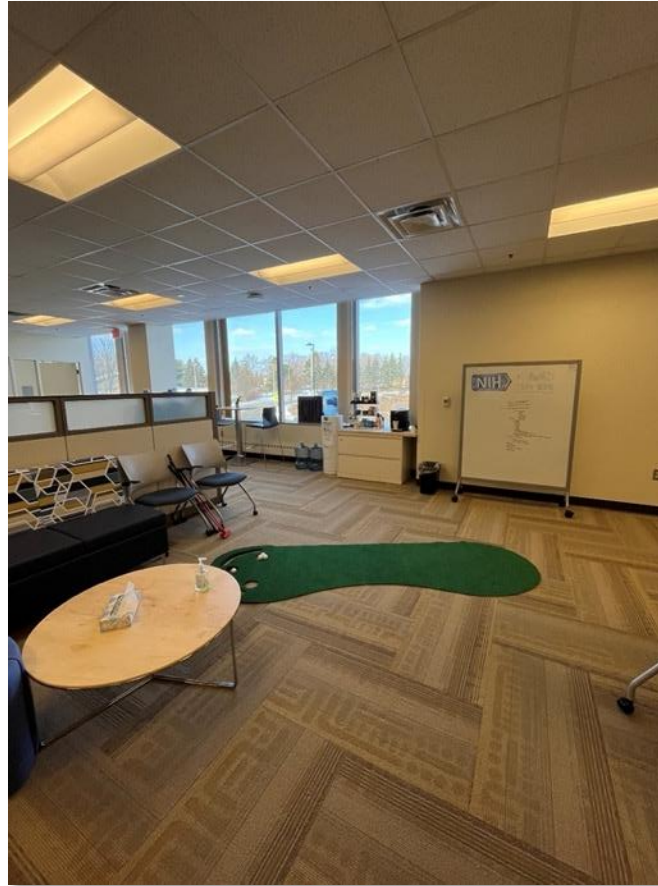
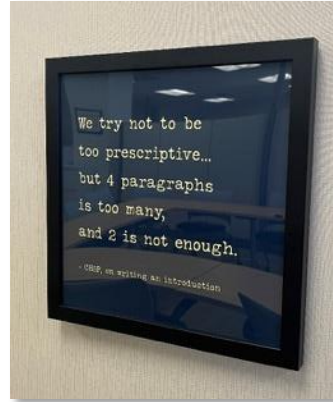
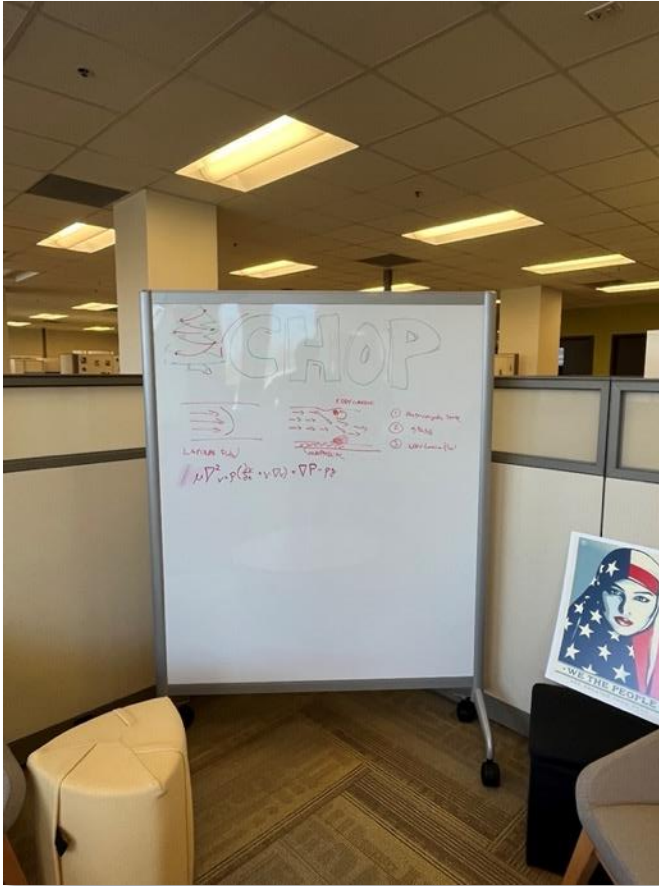


The Conference

# Transitioning Cubicles to Pods



# Signature Features



# Continual Iteration and Improvement



Evolving Space Needs



Sound Accessibility and  
Improved Hybrid





People Vote with Their Feet



# CHOP Redesign

Improving Workplaces  
Through Intentionality



# Thank You

[mitmead@med.umich.edu](mailto:mitmead@med.umich.edu)

@ItMitchMead

SurgeryRedesign.com

A background graphic consisting of a network of interconnected nodes and lines. The nodes are represented by small circles of varying shades of blue and teal, connected by thin, light-colored lines. The overall pattern is abstract and resembles a molecular structure or a data network. The background has a subtle gradient from light teal on the left to a slightly darker blue on the right.

# **Policy Impact Awards**

---

# Policy Engagement Faculty Advisors



**Paula Lantz**



**THANK YOU!**  
**Renu Tipirneni**



2022

**IHPI POLICY  
IMPACT  
AWARD**



**Sue Anne Bell**

PhD, FNP-BC, FAAN

for impactful engagement and leadership to improve disaster response efforts on a national level



**Karandeep Singh**

MD, MMSc

for sustained efforts to evaluate and improve clinical prediction models

A background graphic consisting of a network of interconnected nodes and lines. The nodes are represented by circles of varying sizes, some solid and some hollow, connected by thin lines. The overall color scheme is a gradient of light blue to teal.

# **Thank You for Your Participation!**

IHPI staff will be available during the reception  
to answer questions