

**#ihpi20**



# ***IHPI member*** **FORUM**

***January 22, 2020***



INSTITUTE FOR  
HEALTHCARE POLICY & INNOVATION  
UNIVERSITY OF MICHIGAN

---

# STATE OF THE INSTITUTE



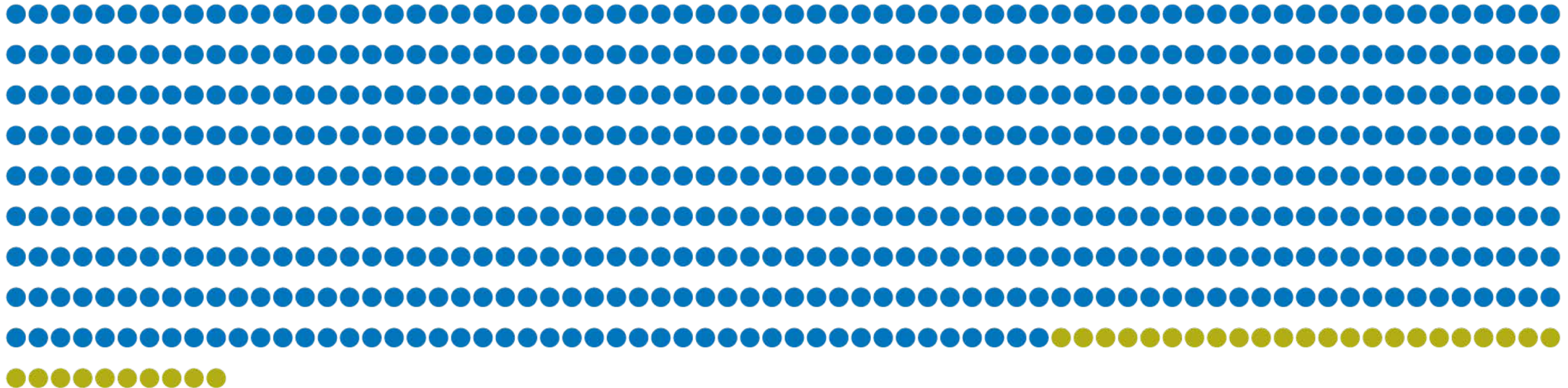
# Membership Has Doubled Since IHPI's Formation



**640** members as of 12/31/19

**607** faculty members

**+** **33** scholar members



# A Vibrant Community of Multidisciplinary Collaborators



**640** members as of 12/31/19

*Averaging ~5 new members per month for last 5 years*

**59** new faculty members CY19

**5%**

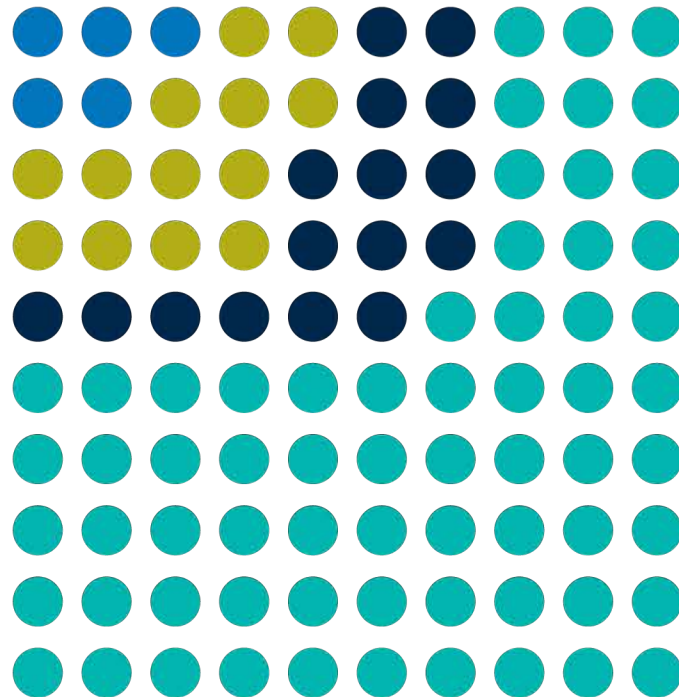
Nursing

**13%**

Public Health

**66%**

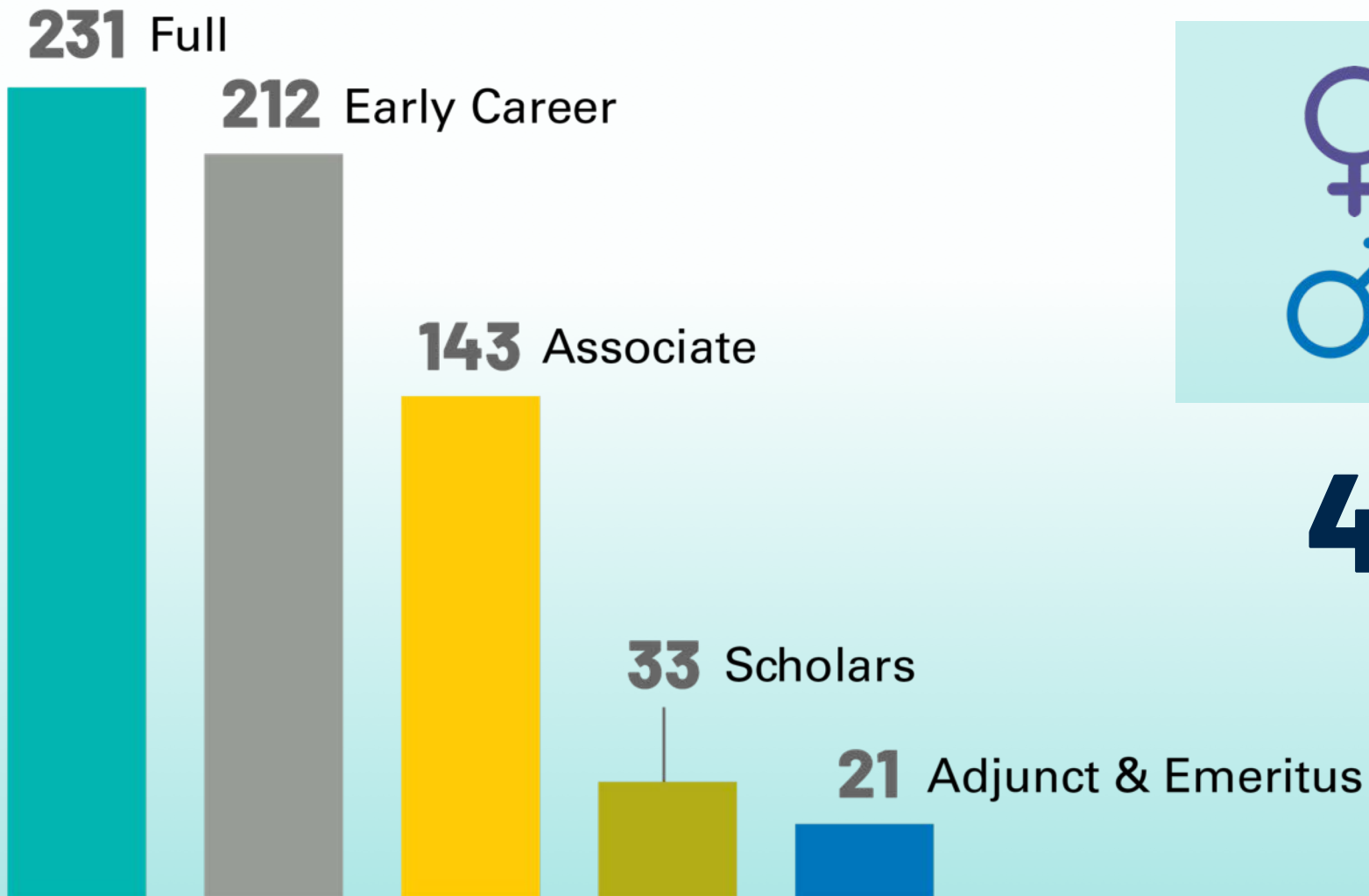
Medical School



**16%** Other U-M schools, colleges, and institutes

- **NEW: Architecture & Urban Planning**
- Art & Design
- Business
- Dentistry
- Engineering
- Information
- Institute for Research on Women & Gender
- Institute for Social Research
- Kinesiology
- Law
- Literature, Science & the Arts
- Pharmacy
- Public Policy
- Social Work
- U-M Dearborn
- U-M Flint





♀ 50.3% Female  
♂ 49.7% Male

49 faculty promotions  
FY19

# IHPI Health Services Research ~10% of all U-M Sponsored Research

**\$1** Billion in HSR active sponsored research

**\$147** Million in FY19 HSR research expenditures

**237**

New FY19 Awards

**37**  
of \$1M  
or more

total of  
**\$223M**  
in new awards

# Research Highlights

Look for an email about our annual report



The screenshot shows the top portion of the IHPI website. At the top left is the IHPI logo, which includes a large yellow 'M' and the text 'INSTITUTE FOR HEALTHCARE POLICY & INNOVATION UNIVERSITY OF MICHIGAN'. To the right of the logo is a navigation menu with links for 'Our Experts & Partners', 'Policy Priorities', 'Signature Programs', 'Education & Training', and 'Member Resources'. Below the navigation is a teal banner with the text 'Welcome to the 2019 IHPI Annual Report'. Underneath the banner is a white section titled 'Who we are' with a paragraph describing the institute's mission and faculty. To the right of this text is a circular portrait of John Z. Ayanian, M.D., with his name and title below it. Further right is a yellow box with a quote icon and the text 'At IHPI, we see these challenges as opportunities for innovation'. Below the quote is another yellow box with the text 'A letter from our director'.

The screenshot shows the top portion of an IHPI newsletter. At the top left is the IHPI logo. To the right of the logo is the text 'Inside IHPI News for the IHPI Community NOVEMBER 2019'. Below the logo and text is a white section titled 'A Message FROM THE DIRECTOR'. Underneath this is a blue header for the article 'IHPI National Advisory Board offers strategic guidance'. Below the article title is a paragraph of text starting with 'On October 25, we welcomed IHPI's National Advisory Board to Ann Arbor for our fifth annual meeting. This year, the theme was "Striving for Local, National & Global Health Equity," and discussion throughout the day focused on the following topics:'. Below the paragraph is a bulleted list starting with 'Dr. Tachi Yamada described his vision for launching a new U-M Center for Global Health Equity, which will be established through a \$10 million gift from Dr. Yamada and his wife, Leslie. The board discussed ideas for...'



Check out our monthly newsletter and follow us on Twitter (@UM\_IHPI)



# Accelerating Synergy Award Funding



## Accelerating Synergy Award

IN PARTNERSHIP WITH IHPI

Partnership to fund  
two Health Services Research  
awards of \$100,000 each

*Designed to support interdisciplinary research teams  
pursuing large multi-component NIH grants*

# Accelerating Synergy Award Funding



## Accelerating Synergy Award

IN PARTNERSHIP WITH IHPI

*Designed to support interdisciplinary research teams pursuing large multi-component NIH grants*

Partnership to fund two Health Services Research awards of \$100,000 each

**2020 recipients**



Carlozzi



Meade



# Robust Productivity in 2018



**2,171**  
ARTICLES



**931**  
JOURNALS



**491**  
FACULTY MEMBERS  
of 552 (89%)

**HIGH IMPACT journals in 2018**

**210** ARTICLES

published by

**165** AUTHORS

---

# LEADERSHIP UPDATES



# New U-M Leadership Roles



**Cunningham**

*U-M Interim Vice  
President for  
Research*



**Dimick**

*Department of  
Surgery Chair*



**Friese**

*Cancer Center  
Associate Director  
for Cancer Control  
and Population  
Health*



**Kerr**

*Internal Medicine  
Vice Chair of  
Diversity, Equity  
and Well-being*



**Mukherjee**

*Cancer Center  
Associate Director  
for Quantitative  
Data Sciences*



**Wiens**

*Precision  
Health  
Co-Director*

# *New Leadership Roles Beyond U-M*



**Roberts**

*Co-Chair  
Michigan  
Dementia  
Coalition*



**Shaefer**

*Special Counselor  
to Director  
Michigan Department  
of Health and  
Human Services*



**Heisler**

*Medical Director  
Physicians for  
Human Rights*



**Ayanian**

*Editor  
JAMA Health  
Forum*



**Richardson**

*Editor  
Annals of Family  
Medicine*

# Institute Leadership Team



**Chopra**

Hospital Medicine



**Englesbe**

Surgery



**Farris**

Pharmacy



**Hawley**

General Medicine



**Langa**

General Medicine



**Malani**

Infectious Diseases



**Waljee**

Surgery



**Manojlovich**

Nursing



**Piette**

Public Health



**Prosser**

Pediatrics



**Richardson**

Family Medicine



**Ryan**

Public Health



# *Institute Leadership Team Transitions*

**Welcome**



**Chopra**

Hospital Medicine  
Division Chief



**Malani**

Infectious Diseases  
U-M Chief Health Officer



**Waljee**

Plastic Surgery  
Director, CHOP

# *Institute Leadership Team Transitions*

**Thank you**



**Cohn**

Engineering



**Lantz**

Public Policy



**Levy**

ISR

# *Preparing for the Managing Director Transition*



**Gail Campanella**





# Early Career Faculty Advisory Council



**Moniz**  
OB-GYN  
*Chair*



**Barnes**  
Cardiovascular  
Medicine



**Bell**  
Nursing



**Costa**  
Nursing



**Dossett**  
Surgery



**Herrel**  
Urology



**Hoffman**  
Nursing



**Janevic**  
Public Health



**Lagisetty**  
General  
Medicine



**Lin**  
Psychiatry



**Mathis**  
Anesthesiology



**Maust**  
Psychiatry



**Nathan**  
Surgery



**Spector-  
Bagdady**  
OB-GYN



**Vaughn**  
Hospital  
Medicine



**Veenstra**  
Hematology  
& Oncology

# *Early Career Faculty Advisory Council Chair Transition*

**Welcome!**



**Moniz**



**Maust**

**Thank you!**



# Early Career Faculty Advisory Council: Helping to Identify Priorities

**81 early career faculty** attended “**Meet & Eat Sessions**” & recommended new programs and services:

- Leadership development
- Mentoring
- Shared analytical resources



**Dossett**  
Surgery



**Lin**  
Psychiatry



**Herrel**  
Urology



**Veenstra**  
Hematology  
& Oncology



**Hoffman**  
Nursing

**NEW in  
FY20**

THIRD ANNUAL

**At maximum capacity  
with 45 attendees**

***Early Career Faculty  
Development Workshop***

***Culture & Team Building***

January 22, 2020 | 9:00am – 2:00pm



# CONGRATULATIONS

TO OUR 2020 **Emerging Scholars**



**Barnes**

*Hosted by*

**UCSF** Philip R. Lee Institute  
for Health Policy Studies



**Moniz**

*Hosted by*

 **Penn LDI** LEONARD DAVIS INSTITUTE  
of HEALTH ECONOMICS

*Designed to  
provide career  
development  
opportunities for  
early career  
faculty via invited  
presentations at  
prestigious peer  
universities*

---

# Education, Training & Faculty Professional Development



# *New Education & Training Lead*

**Overseeing a portfolio of education, training and professional development programs:**

- Seminars
- Massive Open Online Courses (MOOCs)
- Faculty professional development workshops & programs
- Student engagement programs



**Welcome!**

**Hawley**

General Medicine



**Thank you!**

**Richardson**

Family Medicine



# Education & Training Workgroup



**Abbott**  
Nursing



**Admon**  
OB-GYN



**Farris**  
Pharmacy



**Gadepalli**  
Surgery



**Gagnier**  
Orthopedic  
Surgery



**Herrel**  
Urology



**Sussman**  
General  
Medicine



**Wallner**  
General  
Medicine

Thank you!



**Cohn**  
Engineering



**Jarman**  
Public Health



**Ryan**  
Public Health

Interested in joining the E&T workgroup? Contact Jason Wolfe at [jbwolfe@umich.edu](mailto:jbwolfe@umich.edu)

# Education & Training Workgroup



**Abbott**  
Nursing



**Admon**  
OB-GYN



**Farris**  
Pharmacy



**Gadepalli**  
Surgery



**Gagnier**  
Orthopedic  
Surgery



**Herrel**  
Urology



**Sussman**  
General  
Medicine



**Wallner**  
General  
Medicine

**NEW  
Members**

Interested in joining the E&T workgroup? Contact Jason Wolfe at [jbwolfe@umich.edu](mailto:jbwolfe@umich.edu)

# ***Apply now! 2020 HSR Summer Student Fellowship & Internship Program***

- Interdisciplinary research experience for students to work with faculty from different academic departments
- Open to master's, doctoral, and medical students
- Accepted students receive a \$4,500 stipend

**Funded projects  
will be announced  
by March 15**

**Interested? Submit your faculty project proposal by January 31!**

**For more information,** contact Jason Wolfe at [jbwolfe@umich.edu](mailto:jbwolfe@umich.edu)

# *Coming in Spring 2020!*

## *New early career faculty workshop*

### **Transition to First R01**

Three-part workshop series to help early career faculty gain a high-level understanding of the R01 development trajectory.

Workshop 1:

Developing the  
Aims Page

**Early May** (3 hours)

Workshop 2:

Study Team and  
Sub-Contracts

**Mid-May** (2 hours)

Workshop 3:

Project Timeline  
and Budget

**Early June** (2 hours)

**For more information,** contact Jason Wolfe at [jbwolfe@umich.edu](mailto:jbwolfe@umich.edu)

# IHPI One of Six National Clinician Scholars Program Sites



Yale

UCLA

Duke

UCSF  
New 2019



**Chang named as a new Co-Director**  
of the NCSP at IHPI

**7** Incoming scholars in  
2020-2022 cohort

**May 2020:**  
Application opens for  
2021-2023 cohort

## Successful Spring 2019 NCSP Site Visit

- *"Amazingly imaginative and productive scholars"*
- *"Learning to work in team science more quickly than some faculty"*



**October 2020:** U-M to host  
NCSP Annual Meeting



---

# Data & Methods Hub



# Data & Methods Hub FY19



**22% growth** in data requests across all datasets



**42% increase** in secure cloud computing usage



**18 publications** with partnering investigators



**New education opportunities:** SAS Training, Medicare 101, and Code Lab

# *New Data Available*



## **Truven Medicaid**

Pooled healthcare claims of ~7M Medicaid enrollees from 10+ states



## **AMA Physician Masterfile**

Education, training and certification data on nearly all U.S. physicians



## **Torch Insight**

Data on unique attributes of ACOs, bundled payments, hospitals, physician groups and insurers

# Office Hours: Medicare & Medicaid Data

Are you preparing to work with Medicare or Medicaid claims data?

**Dr. Chiang-Hua Chang** is available for **1:1 consultations** to discuss:

- Proper study design
- File structure and layout
- Basics of the Medicare and Medicaid programs
- Pitfalls to watch out for during your analysis
- And more!



**Chang**

Geriatric and Palliative  
Medicine

**For more information,** contact Dawn Russell at [dawnruss@umich.edu](mailto:dawnruss@umich.edu)

# Early Career Faculty Analyst Hiring Survey

The IHPI Data & Methods Hub is exploring potential services to **facilitate hiring and cost-sharing of analysts among early career faculty.**

Watch for a survey via email in February





---

# Policy Engagement



# *Increasing Engagement with Members around Policy*



Targeted dissemination of policy-relevant findings



Connecting members to policymakers and stakeholders



Strategic nominations for national advisory committees



Policy sprints



Office hours

# Policy Sprints

*Funding available for rapid-cycle (3-12 month) analyses of a policy-relevant question, with a targeted dissemination plan and potential to inform health policy.*

**10** Projects launched since spring 2018



**4** completed



**6** in progress

**Next call for proposals:**  
April 2020

**For more information,** contact Sarah Wang at [sjraby@umich.edu](mailto:sjraby@umich.edu)

# Tobacco 21 Sprint: Example of Reach



Poster presentation at AcademyHealth National Health Policy Conference

**February 2019**



Holly Jarman interviewed on Michigan Stateside

**April 2019**



BMJ Opinion piece published

**June 2019**

**March 2019**



IHPI brief, white paper, & U-M press release released



Webinar presenting results, for stakeholders in Michigan and across the country (65 attendees)

**May 2019**



Op-Ed in The Hill



Virginia Dept. of Health requested a consultation with researchers around Virginia's implementation and evaluation of Tobacco 21

# ***Call for Applications: IHPI Policy Faculty Advisor***

## **The Role**

Provide advice for policy engagement activities such as Policy Sprints, creating policy-relevant products and disseminating member research.

## **Commitment**

Two-year term, faculty effort estimated at 10%

## **Apply by**

Monday, February 3



**For more information,** contact Sarah Wang at [sjraby@umich.edu](mailto:sjraby@umich.edu)



---

# Strategic Initiatives



# Healthy Michigan Plan Evaluation: First 5 Years



~ 20 faculty  
from six  
U-M schools



\$8 million+ in  
funding FY14-20



9 evaluation  
reports in FY19



Presentations  
at major  
conferences



18 manuscripts  
published or  
under review

Evaluation has  
led to other  
collaborations  
with MDHHS



# The Washington Post

Prices may vary in areas outside metropolitan Washington.

SU V1 V2 V3 V4



Partly sunny 87/72 • Tomorrow: Sunny, hot 94/75 BS

Democracy Dies in Darkness

TUESDAY, OCTOBER 1, 2019 • \$3.50



BRITTANY GREESON FOR THE WASHINGTON POST

## Evidence builds for ACA

With health-care law's future in doubt, research shows it has saved lives

BY AMY GOLDSTEIN

DETROIT — Poor people in Michigan with asthma and dia-

**Bonnie Sparks walks on a treadmill in Wayne, Mich., on Sept. 4. If not for the state's Medicaid expansion under the**

lawsuit, brought by a group of Republican state attorneys general, that challenges the law's constitutionality. A trial

**“Michigan has emerged as a hub for understanding the ACA’s effects on health because University of Michigan researchers have been rigorously evaluating the Healthy Michigan Plan...”**

October 1, 2019

# *Healthy Michigan Plan Evaluation: Next 5 Years*



New HMP requirements in 2020: community engagement and premium/healthy behaviors



New evaluation design for 2020-2024 submitted to CMS, including RCT of 230,000 enrollees

# National Poll on Healthy Aging: Year 3



AARP sponsorship renewed through December 2020



Data now available via ICPSR



**8** poll reports in 2019



**5** Health Affairs blog posts

**5** Published or accepted papers

**4** Papers under review

**Interested in collaborating?** Contact [healthyaging@umich.edu](mailto:healthyaging@umich.edu)



Home Press News

# Senator Stabenow Introduces Medicare at 50 Act

Wednesday, February 13, 2019



WASHINGTON, D.C. – U.S. Senator Debbie Stabenow (D-MI) today introduced the Medicare at 50 Act (S.470) to give people between the ages of 50 and 64 years old the option of buying into Medicare. Millions of Americans approaching retirement or forced to retire early due to layoffs or mandatory retirement face increasing health care needs and rising costs. U.S. Senator Gary Peters (D-MI) is an original cosponsor of this legislation.

“Our legislation is a win-win for Michigan families,” said **Senator Stabenow**. “It will help strengthen Medicare, lower costs, and improve care for millions of people.”

“Providing anyone age 50 or older the option to buy into Medicare is a commonsense measure that will help expand access to affordable health care for millions of families across the country, including in Michigan,” said **Senator Peters**.

Allowing more Americans to buy into Medicare has the potential to lower their costs, reinforce the existing Medicare program, and strengthen the existing health insurance marketplace. Recent polling from the Kaiser Family Foundation indicates that 77 percent of the public supports giving people between the ages of 50 and 64 the option to buy Medicare.

Today, 27% of adults approaching retirement are not confident that they can afford health insurance over the next year, and more than a quarter have issues navigating health insurance options, coverage decisions, and out-of-pocket costs. Many did not get the care they needed because of how much it would cost or kept a job or delayed retirement to keep their employer-sponsored health insurance.

Later  
03/06  
to Reim  
02/26/1  
Pharma  
02/15/19  
Passage  
02/14/19  
Legislati  
Heritage A  
02/13/19 S  
at 50 Act

**NATIONAL POLL ON HEALTHY AGING**  
UNIVERSITY OF MICHIGAN  
January/February 2019  
HEALTHYAGINGPOLL.ORG

### Health Insurance Decision-Making Near Retirement

Every day about 10,000 baby boomers in the U.S. turn 65. As more Americans approach retirement age and eligibility for Medicare coverage, many face difficult decisions about their health insurance and its associated costs. In October 2018, the University of Michigan National Poll on Healthy Aging asked a national sample of adults age 50–64 about their current and future plans for their health insurance coverage, medical care, and employment.

#### Affording Health Insurance

One in four poll respondents (27%) had little or no confidence in being able to afford the cost of their health insurance over the next year. Almost half (45%) had little or no confidence in being able to afford the cost of their health insurance when they retire. Adults age 60–64 (63%) were more likely than those age 50–59 (52%) to be confident about being able to afford the cost of health insurance in retirement.

In the last year, 11% of adults age 50–64 reported thinking about going without health insurance, and an additional 5% decided to go without health insurance. Hispanics were more likely (22%) than non-Hispanic Whites (11%) and Blacks (4%) to think about going without or go without health insurance.

#### Planning for Changes in Health Insurance

Among poll respondents, 66% had employer-sponsored health insurance, 22% had government-sponsored health care coverage (such as Medicaid, Medicare, VA, or military coverage), 8% had individual private insurance including exchange.

#### CONFIDENCE AFFORDING HEALTH INSURANCE AMONG ADULTS AGE 50-64

- 27% are not confident they can afford health insurance over the next year
- 45% are not confident they can afford health insurance when they retire

Sponsored by **AARP** and **MICHIGAN MEDICINE** UNIVERSITY OF MICHIGAN  
Directed by **INSTITUTE FOR HEALTHCARE POLICY & INNOVATION** UNIVERSITY OF MICHIGAN



## Michigan Program on Value Enhancement

*Focused on improving value in healthcare, in partnership with Michigan Medicine*



**Kerr**  
Director



**Dossett**  
Co-Director



**Barnes**  
Assistant  
Director



**Henderson**  
Assistant  
Director

**NEW!**

# ***New! MPrOVE Innovation to Implementation (i2i) Lab***

*4<sup>th</sup> Tuesday of the month from 4-5 pm – Next Lab: Tuesday, 1/28*

**Goal:** Connect researchers in the healthcare value space with health system partners.

**Format:** Brainstorming and rapid feedback on research concepts and pilot projects focused on quality, safety, value and appropriateness.



**For more information,**  
contact Emma Steppe at  
[emsteppe@umich.edu](mailto:emsteppe@umich.edu)



# Opioid Solutions Research Network

85+ U-M researchers



Networking events and email newsletter with news, events, publications and funding opportunities

**Interested in joining?**

Contact Emma Steppe at [emsteppe@umich.edu](mailto:emsteppe@umich.edu)

New Massive Open Online Course (MOOC)

# ***Impacting Opioid Use and Misuse: Education and Practices for Non-Prescribing Providers***



**More than 20**  
U-M faculty  
featured



**Target audience:**  
Non-prescribing  
healthcare  
providers



**Continuing  
education credits**  
for healthcare  
professionals



**Launched**  
October 2019  
1,000+ learners  
registered!



# *Coming in 2020: Telehealth Research Initiative*

## **Telehealth Research Incubator**

- Repository of telehealth grant templates
- Defined telehealth cohorts within Optum, BCBSM, and Medicare data
- Survey question bank

## **Telehealth Research Network**

- Open to all IHPI members working in telehealth
- Promote collaborations among telehealth researchers
- Watch for an email announcement in February!



**Ellimoottil**

Urology

**For more information,**  
contact Emma Steppe at  
[emsteppe@umich.edu](mailto:emsteppe@umich.edu)



# *Building a Network: Workforce Diversity in Healthcare*

## Next steps:



Gauge interest of  
IHPI members



Convene a  
focus group



**Ayanian**  
Co-chair



**Telem**  
Co-chair

Check your email and complete survey by **Friday, January 31** if you have an interest in this topic!

**For more information,** contact Jodie Moore at [jodierzeumich.edu](mailto:jodierzeumich.edu)

---

# Other Highlights



# \$10 million gift fuels U-M efforts to improve the world's health



**Dr. Tadataka (Tachi) &  
Leslie Davis Yamada**



**Ayanian**  
Co-Director



**Kolars**  
Co-Director

*"The University of Michigan's public mission and excellence across many academic disciplines make us uniquely suited to address health inequities around the world."*

*Mark Schlissel, MD, PhD  
U-M president*



HARVARD  
UNIVERSITY



# Opioids: Policy to Practice

---

A UNIVERSITY OF MICHIGAN -  
HARVARD UNIVERSITY SUMMIT

May 10, 2019

[opioidsummit.umich.edu](http://opioidsummit.umich.edu)

**Harvard Summit** | October 2019

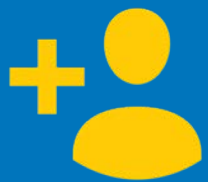
**350 attendees | 250+ livestream**

(health departments, law enforcement, community-policy organizations, insurers, academics)



# MICHIGAN MENTORSHIP ACADEMY

June 2019 | Ann Arbor, MI



**83** participants from  
U-M & elsewhere



***“Inspired tangible  
goals for what I want  
to do with my career”***

**Save the Date:** Friday, September 25, 2020





**IHPI**  
**ON THE GO**



**INSTITUTE FOR  
HEALTHCARE POLICY  
& INNOVATION**  
UNIVERSITY OF MICHIGAN



School of Public Health  
**November 2019**

North Campus  
Research Complex  
**December 2019**



# Serving Our Community



IHPI Staff  
Service Day  
December 2019



Family Community Service Day  
May 2019





# *Celebrating Our Community*



**SAVE THE DATE**  
**IHPI Tailgate**  
**Saturday, Sept. 26, 2020**

# Upcoming Events



**Research Seminar  
SERIES**

**Feb. 20**

**Using Research Thinking  
to Address Health  
Policy Problems**

Nicole Lurie, MD, MSPH



BIPARTISAN POLICY CENTER

**Feb. 24**

**Making Prevention  
the Nation's Top Health  
Policy Priority**

Anand Parekh, MD, MPH

**CRLT**

**March 9**

**Moving the Needle:  
Shifting the Conversation  
Around Sexual Harassment**

CRLT Players



SAVE THE DATE

# THE ACA TURNS 10

A Conversation with Health Policy Experts

March 26, 2020 | 2:30-4:30 PM

Palmer Commons

CO-SPONSORED BY



## MODERATORS

**John Ayanian, MD, MPP**  
Director, U-M Institute for Healthcare  
Policy and Innovation

**Howard Markel, MD, PhD**  
Director, U-M Center for the  
History of Medicine

## GUEST SPEAKERS

**Jonathan Cohn**  
*Huffington Post*

**John McDonough, DrPH, MPA**  
Harvard T. H. Chan School  
of Public Health

**Marianne Udow-Phillips, MHSA**  
Center for Health and Research  
Transformation

**Gail Wilensky, PhD**  
Project Hope

*Serving as the IHPI Director's Lecture and  
the Horace W. Davenport Lecture*

# Take advantage of your member benefits!

Check out these upcoming events



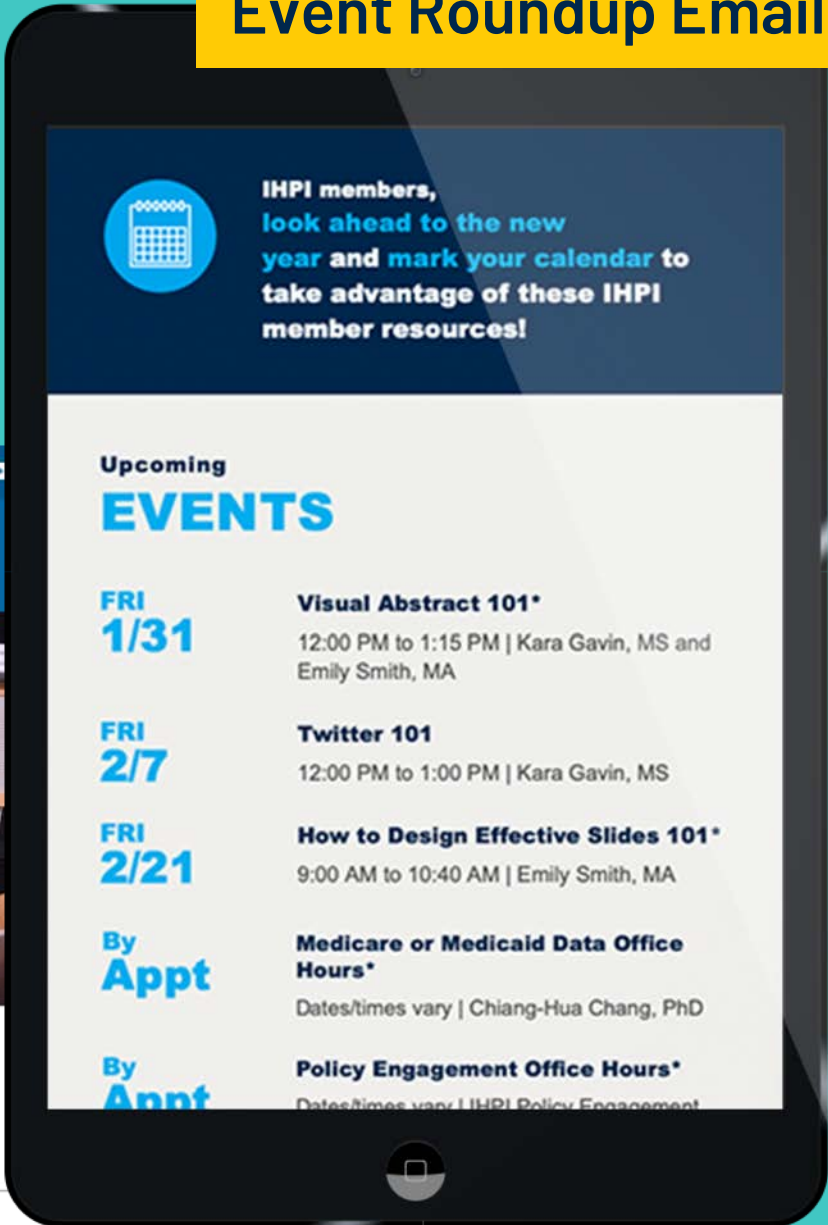
Home | IHPI Events

[ihpi.umich.edu/events](https://ihpi.umich.edu/events)

Keywords, Sponsors, Locations, or Categories

REFINE SEARCH Event Type  Date Range: today  mm/dd/yyyy

## Event Roundup Email



---

# Your Questions & Comments?





---

# Impact Accelerator Award





## **Michelle Moniz, MD, MPH**

Assistant Professor, Department of Obstetrics  
and Gynecology, Michigan Medicine

*IHPI Impact Accelerator Awards Committee*



- Recognizes members who demonstrate a commitment to impacting policy or practice
- Criteria for selection:
  - Use of high quality research and a discernable policy impact
  - Level of engagement with policy makers to address mission of IHPI
  - Endorsement from “end-user” of research

***Winner awarded  
\$1,000 to faculty  
account & a research  
brief written by IHPI  
communications staff***



- Nominations due in Fall 2020
- Application
  - Nomination form (self nominations accepted and encouraged)
  - One-page summary of research and the impact on policy and/or practice
  - Letter of support from an end-user of the research



## Michigan Opioid Prescribing Engagement Network

**Michael Englesbe**, MD, Professor, Dept. of Surgery

**Chad Brummett**, MD, Associate Professor, Dept. of Anesthesiology

**Jennifer Waljee**, MD, MPH, MS, Associate Professor, Dept. of Surgery



- Provided evidence-based, preventative approaches to address the opioid crisis
- Created the first opioid prescribing guidelines for 25 common general surgery procedures
- Efforts have brought real changes in practice across the State of Michigan





## **Renu Tipirneni, MD, MSc**

Assistant Professor, Dept. of Internal Medicine

- Rigorous evaluation of Medicaid policy changes in Michigan
- Translated primary care access and developed maps to help MDHHS with outreach
- Research findings helped to inform Medicaid proposals to implement work requirements in Michigan



---

# Volunteer Service Recognition





# *Volunteer Service Recognition*

**Sarah Hawley, PhD, MPH**

Professor, Department of Internal Medicine,  
Michigan Medicine

Education & Training Faculty Lead



# ***Faculty Volunteer Recognition: Education & Training Programs***

**Each year, numerous faculty volunteers generously give their time and expertise to help facilitate multiple education programs:**

- Education and Training Workgroup
- U.S. Healthcare MOOC in-person student sessions
- K Writing Workshop
- K Mock Study Sections
- R01 Boot Camp
- Summer Student Lunch & Learn Series
- Summer Student Skill-Building Seminars

# ***THANK YOU to our Faculty Volunteers!***

**65**

**faculty led or facilitated  
an IHPI education/training  
program during academic  
year 2018-2019**

*Those who volunteered at least  
once during AY 2018-2019 have  
received a letter of recognition from  
John Ayanian and Sarah Hawley.*

**Interested in volunteering?**

Look for notifications in  
the IHPI newsletter, and/or  
contact Jason Wolfe at  
[jbwolfe@umich.edu](mailto:jbwolfe@umich.edu)

# *Recognizing Outstanding Volunteers*

Special thanks to the 11 IHPI members who volunteered for multiple programs over the past year.

- Justin Dimick, MD, Medical School
- Geoffrey Barnes, MD, Medical School
- Caroline Richardson, MD, Medical School
- Patti Abbott, PhD, School of Nursing
- Lindsay Admon, MD, Medical School
- Amy Cohn, PhD, College of Engineering
- Chad Ellimoottil, MD, Medical School
- Karen Farris, PhD, College of Pharmacy
- Claire Kalpakjian, PhD, Medical School
- Daniel Lee, PhD, School of Public Health
- Sarah Reeves, PhD, Medical School



# Trivia Time!

PRESENTED BY:

sporcle

#ihpi20



## ***And now...***

- Reception
- Poster session
- Connect with IHPI table
- Photo booth

***Grab your  
IHPI hat on  
the way out!***

