

MEMBER FORUM

01.24.18

2–5 PM | NCRC Building 18 Dining Hall

#ihpi18



- State of the Institute Address
- Opportunities for Engagement in Strategic Initiatives (Panel)
- Recognizing Faculty Volunteer Service
- Impact Accelerator Award
- Networking Reception

MEMBER FORUM AGENDA



STATE
— OF THE —
INSTITUTE



IHPI Remains a Magnet for Health Services Research and Policy Collaborations

61+ 

new members
in FY17



~70%

new members
FY17 early
career faculty

532 

total members
as of Dec. 31

38%

of current
members early
career faculty

New disciplinary
perspective:

STAMPS
SCHOOL OF ART & DESIGN

M-Des Integrative Design Program

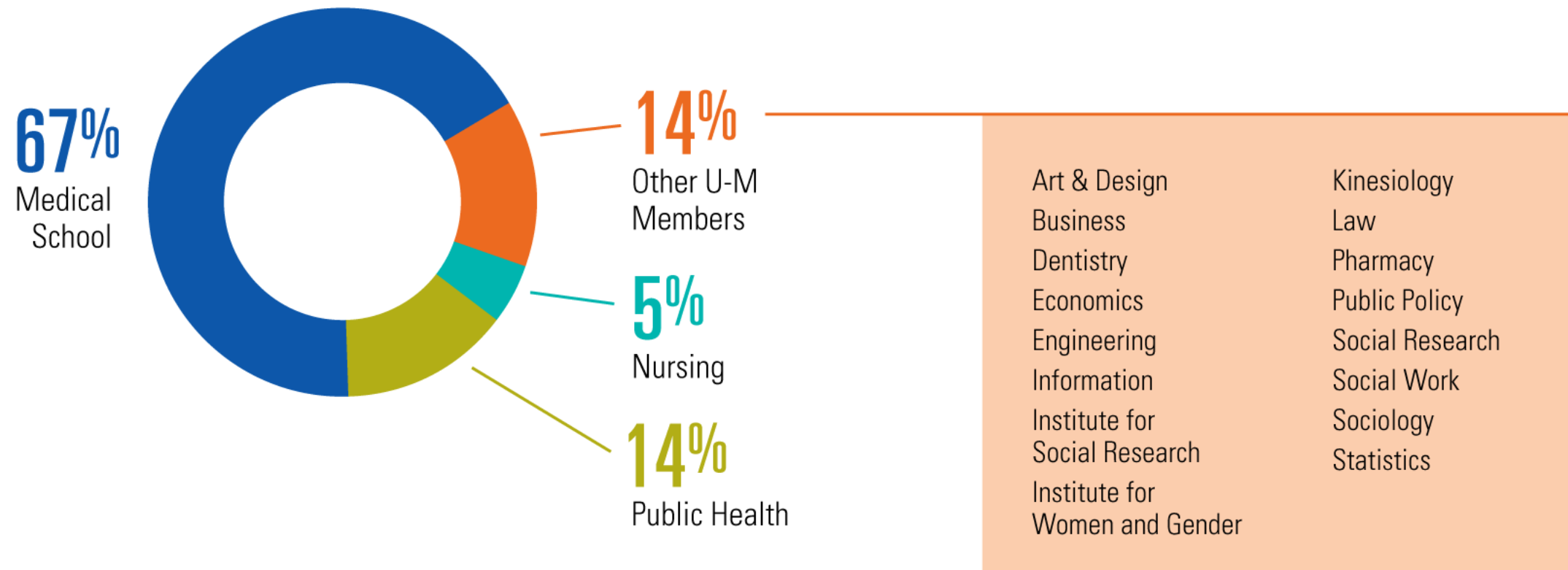
“Intellectual power of U-M’s outstanding schools and colleges addressing health care challenges together”

–Mark S. Schlissel

14 Ann Arbor Campus Schools and Colleges

2 Ann Arbor Campus Institutes (ISR and IRWG)

3 Members from Flint & Dearborn Campuses



Helping to Fuel Career Advancement



84

JULY '16 – DEC '17

Physical & Virtual Home to Health Services Research Collaborating Groups

21 Member-Led Collaborating
Centers and Programs

*NEW
LEADER*



CENTER FOR
BIOETHICS AND
SOCIAL SCIENCES
IN MEDICINE

Reshma Jagsi

3 NEW CENTERS & PROGRAMS



CENTER FOR
EVALUATING
HEALTH
REFORM

Andrew Ryan



MICHIGAN INTEGRATED
CENTER FOR HEALTH
ANALYTICS & MEDICAL
PREDICTION

Brahmajee Nallamothe



CENTER FOR
EYE POLICY &
INNOVATION

Joshua Stein

Collaborative Quality Initiatives

25

IHPI Members Leading/Co-Leading
15 BCBSM-Funded Collaborative Quality Initiatives

NEW LEADERS



MICHIGAN
SURGICAL QUALITY
COLLABORATIVE

Michael Englesbe



MICHIGAN
SURGICAL QUALITY
COLLABORATIVE

Greta Krapohl

FY17 Sponsored Research Funding for IHPI Members Remains Notably Strong

\$880 Million in HSR active sponsored research

\$168 Million in HSR research expenditures representing over 10% of U-M total research expenditures

259
New FY17 Awards


45 of them \$1M or more

total of
\$133.8M
in new awards

Accelerating Evidence — Making an Impact

Publications for CY 2016

 **436** members

 **833** journals

 **2,152** articles

Top 24 Journals

191 articles by 133 authors

Am J Psychiatry	JAMA Psychiatry
Am J Public Health	JAMA
Am J Respir Crit Care Med	JNCI
Ann Intern Med	J Clin Oncol
Ann Neurol	J Hepatology
BMJ	J Am Coll Cardiol
Circulation	Lancet
Eur Heart J	Lancet Neurol
Eur Uro	Lancet Oncol
Gastroenterology	New Engl J Med
Health Aff	PLOS Med
JAMA Intern Med	Science

2017 Top Policy & Practice Insights



Recent Key U-M Leadership Appointments



Bishr Omary
Chief Scientific Officer
for Michigan Medicine



Martin Philbert
Provost and Executive
Vice President for
Academic Affairs



Rebecca Cunningham
Associate VP for
Research, Health Sciences



Sachin Kheterpal
Co-Director
Precision Health



Preeti Malani
U-M Chief
Health Officer

National Advisory Board Helping to Set Goals



David Blumenthal
Commonwealth Fund



Garth Graham
Aetna Foundation



James Haveman
The Haveman Group



Michael Johns
Schools of Medicine and Public
Health, Emory University



Gary Kaplan
Virginia Mason
Health System



Paul McCreadie
Arboretum Ventures



Lewis Sandy
UnitedHealth Group



Lisa Simpson
AcademyHealth



Antonia Villarruel
School of Nursing,
University of Pennsylvania



Gail Wilensky
Project HOPE

Off the Field ... And On



The **TEAM**

The **TEAM**

GO BLUE



TEAM
EQUIPMENT
STORAGE

Faculty Leadership Team



Thomas C. Buchmueller
Business



Amy Cohn
Engineering



Justin B. Dimick
Surgery



Karen Farris
Pharmacy



Eve A. Kerr
General Medicine



Kenneth Langa
General Medicine



Paula Lantz
Public Policy



Helen Levy
Institute for
Social Research



Brahmajee K. Nallamothu
Cardiology



John D. Piette
Public Health



Lisa A. Prosser
Pediatrics



Caroline Richardson
Family Medicine

Four New Members in FY17



Thomas C.
Buchmueller
Business



Amy Cohn
Engineering



Justin B. Dimick
Surgery



Karen Farris
Pharmacy



Eve A. Kerr
General Medicine



Kenneth Langa
General Medicine



Paula Lantz
Public Policy



Helen Levy
Institute for
Social Research



Brahmajee K.
Nallamothu
Cardiology



John D. Piette
Public Health



Lisa A. Prosser
Pediatrics



Caroline
Richardson
Family Medicine

Early Career Faculty Advisory Council



Geoffrey Barnes
Cardiology



Amy Bohnert
Psychiatry



Tammy Chang
Family Medicine



Deena Costa
Nursing



Mary Janevic
Public Health



Holly Jarman
Public Health



Donovan Maust
Psychiatry



Michelle Moniz
Obstetrics and
Gynecology



Scott Regenbogen
Colorectal Surgery



Sameer Saini
Gastroenterology



Jennifer Waljee
Plastic Surgery



Lauren Wallner
General Medicine



Maria Woodward
Ophthalmology

Two New Members in FY17



**Geoffrey
Barnes**
Cardiology



**Amy
Bohnert**
Psychiatry



**Tammy
Chang**
Family Medicine



**Deena
Costa**
Nursing



**Mary
Janevic**
Public Health



**Holly
Jarman**
Public Health



**Donovan
Maust**
Psychiatry



Michelle Moniz
Obstetrics and
Gynecology



**Scott
Regenbogen**
Colorectal Surgery



**Sameer
Saini**
Gastroenterology



**Jennifer
Waljee**
Plastic Surgery



**Lauren
Wallner**
General Medicine



**Maria
Woodward**
Ophthalmology

Passing the Baton

FORMER CHAIR



Sameer Saini
Gastroenterology

NEW CHAIR

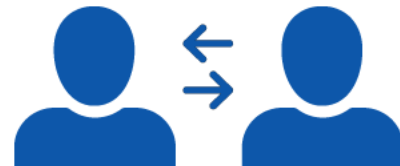


Deena Costa
Nursing

Catalyzing Career Development Opportunities

LAUNCH OF NEW
PROGRAMS IN 2018:

Emerging
Scholars
Exchange Program
(Penn and UCSF)



**SPRING
2018**

Early Career
Development
Workshop



**PILOTED
THIS
MORNING**



GIVE BACK TO THE COMMUNITY

**SAVE
THE
DATE**

FAMILY COMMUNITY SERVICE DAY

Saturday, May 5, 2018 | 10am–1pm

Assisting Give365 to improve local parks.

Open to IHPI members and families.

Children ages 10+ may attend with an adult.



AWARDS & PROFESSIONAL APPOINTMENTS

Through December 2017



2017 AcademyHealth Annual Research Meeting in New Orleans

RSVP
Online by
June 9

Join IHPI
in New Orleans

Sunday, June 25, 2017

6:00–7:30 p.m.

Hyatt Regency New Orleans

Bolden Room 4

M
INSTITUTE FOR
HEALTHCARE POLICY
& INNOVATION
UNIVERSITY OF MICHIGAN

ACADEMY AWARDS



**Distinguished
Investigator Award**
John Ayanian



**Alice S. Hersh New
Investigator Award**
Julia Adler-Milstein



**Outstanding
Dissertation Award**
Rebecca Haffajee



**HCUP Article of
the Year Award**
Michael Thompson



Best Student Poster
John Richardson



Medical School 2016 Dean's Awards



**John
Ayanian**

Clinical and
Health Services
Research



**Ella
Kazerooni**

Clinical and
Health Services
Research



**Kevin
Chung**

Outstanding
Clinician



**Vineet
Chopra**

Excellence in
Teaching



**Beverly M.
Yashar**

Excellence in
Teaching

Medical School 2017 Dean's Awards



Michele Heisler

Health Services
Research Award



Peter Arvan

Distinguished Faculty
Lectureship Award in
Biomedical Research

Commitment to the Next Generation



2017 Mentor Awards



Vanessa
Dalton



Mariel
Lavieri



Lori
Pierce



Sanjay
Saint

Other Notable Awards & Recognition



Sanjay Saint



Jenna Wiens



Eve Kerr

Increasing Representation in the National Academies of Medicine and Engineering



Eve Kerr



Paul Lee



Mark Daskin

Two of the Five National Academy of Medicine Fellows for 2017



Mahshid Abir



Tammy Chang

One of Eight Named to 2016-2017 Cohort RWJF Health Policy Fellows



Christopher Friese

Members Elected to Major Medical Honor Societies



American Surgical Association

*The oldest surgical association in the United States
Established in 1880*



Justin Dimick



Mark Hemmila



Michele Heisler



Sanjay Saint

Members Elected to Major Medical Honor Societies



Justin Dimick



Reshma Jagsi




Lona Mody

EVENTS

Informing and Educating
Members, Policy Makers, the Media, and the Public



The background of the entire page is a bright yellow color with a faint, light-colored geometric pattern of interconnected lines and dots. On the left and right sides, there are large, detailed 3D renderings of virus particles, showing their spherical bodies and numerous protruding spikes or surface proteins.

PANDEMIC!

CONTAGIOUS CRISES FROM AIDS TO ZIKA

With keynote lectures by **DR. ANTHONY FAUCI**,
Director of the National Institute of Allergy and Infectious Disease
at the National Institutes of Health, and **DR. PAUL FARMER**, Harvard
Medical School and Partners in Health, and with a panel of prominent public
health leaders and journalists moderated by **DR. SANJAY GUPTA** of CNN.

**Friday
April 7, 2017**

1:00 p.m. - 5:45 p.m.
with open reception to follow.

Kahn Auditorium, Biomedical Science Research Building
109 Zina Pitcher Place, U-M Campus



Co-sponsored by:



CONFRONTING THE OPIOID EPIDEMIC WHAT WE KNOW & WHAT WE CAN DO



UNIVERSITY OF MICHIGAN

WOLVERINE CAUCUS

Office of Government
Relations

Alumni Association

Tuesday

Sept. 26, 2017

11:30 AM – 1:00 PM

Christman/MML Building, 1st Floor
208 North Capitol Ave.
Lansing, MI 48933



INSTITUTE FOR
HEALTHCARE POLICY & INNOVATION
UNIVERSITY OF MICHIGAN



Medicaid reform summit brings together state officials, stakeholders, and national thought leaders

Monday, December 4, 2017
Capitol Building, Lansing



The Outside and Inside Game of Health Policy

THIRD ANNUAL IHPI DIRECTOR'S LECTURE

Professor Andrew Bindman, M.D.

University of California, San Francisco
Past Director, AHRQ

Thursday, May 4, 2017

North Campus Research Complex, Building 10,
Research Auditorium

4:00–5:00 pm

Reception to follow



INSTITUTE FOR
HEALTHCARE POLICY & INNOVATION
UNIVERSITY OF MICHIGAN





SAVE THE DATE

2018 IHPI DIRECTOR'S LECTURE

Thursday, March 22, 2018

Featuring Jerome M. Adams, M.D.,
M.P.H., the 20th Surgeon General
of the United States





INSTITUTE FOR
HEALTHCARE POLICY & INNOVATION
UNIVERSITY OF MICHIGAN

TAILGATE PARTY

SATURDAY, September 16th, 2017

9:00–11:30 a.m. @ MichiganUnion Patio

Join your IHPI colleagues and their families for plenty of food, fun and spirit before the Wolverines take on Air Force!

This event is open to IHPI faculty members and their families. In the event of rain, the party will be moved indoors.







MISSED LAST YEAR'S TAILGATE?

**SAVE
THE
DATE**

IHPI TAILGATE PARTY

Saturday, September 8, 2018

Richard L. Postma Family Clubhouse,
U-M Golf Course



NEVER ATTENDED AN ORIENTATION?

IHPI MEMBER ORIENTATION BREAKFAST

Thursday, March 8, 2018 | 8:30–9:30 am

IHPI Collaboratory

Contact strosell@umich.edu if interested



SAVE THE DATE



THE **GUPTA**
FAMILY
<**HACKATHON**>
FOR HEALTH
COMMUNICATION

March 23–25, 2018 | www.guptahacks.org | #gfh18



March 23–25, 2018
www.guptahacks.org
#gfh18

Opportunities for Participation

Challenge Contributor: share ideas for challenges

Expert/Mentor: offer expert perspective to teams

Strolling Facilitator: circulate and help teams work through challenges and promote problem-solving

Sign-up sheet and survey on your table



IHPI TO HOST NEJM EVENT

**SAVE
THE
DATE**

HIGH PERFORMING HEALTHCARE ORGANIZATIONS

Wednesday, July 25, 2018 | Michigan League Ballroom

National live-streamed event

SETTING OUR STRATEGIC COURSE



IHPI 5-YEAR REVIEW

FEBRUARY 28–MARCH 1

CHAIR

Michael Mulholland, MD,
*Chair, Department
of Surgery, U-M*

COMMITTEE

Patricia Hurn, PhD, RN,
Dean of Nursing, U-M

Sachin Kheterpal, MD, MBA,
Associate Professor of Anesthesiology, U-M

Timothy Carey, MD, MPH,
*Professor of Medicine & Former Director,
Cecil Sheps Center for Health Services
Research, University of North Carolina*

REVIEW COMMITTEE

FINDINGS & RECOMMENDATIONS

Strengths and Successes

- IHPI Leadership
- Early Career Faculty – strong endorsement for Advisory Council and career development opportunities
- Clinician Scholars Program – “premier training opportunity”
- Data & Methods Hub – accelerating career success & stimulating multi-institution collaboration
- Impact Accelerator – “tremendously successful”

REVIEW COMMITTEE

FINDINGS & RECOMMENDATIONS

Challenges

- Space
- Managing growth
- Focusing on priorities

Opportunities

- Engaging off-site faculty
- Continued alignment with Michigan Medicine & U-M priorities

- **Increasing national recognition and policy engagement**

STRATEGIC INITIATIVES & PROGRAMS



IHPI Strategic Initiatives Aligned with U-M Priorities



Poverty Solutions

Healthy Michigan
Plan Evaluation
& Other MDHHS
Projects
Detroit Community
Health Worker
Initiative



Academic Innovation

Clinician Scholars
Program
Health Policy
MOOCs
Path of
Excellence



Precision Health

Precision Health
Initiative
Opioid Use Case
(Michigan OPEN)



Practice & Policy Engagement

Michigan Program on
Value Enhancement
(MProVE)
National Poll on
Healthy Aging
Policy Impact
Initiative (PI²)

IHPI Clinician Scholars Program

2017 IHPI assumes full responsibility for this program

15 Two-Year Clinician Scholars

17 One-Year Master's Students



IHPI Clinician Scholars



Nauszley Abedini
Lindsay Admon
Nnenaya Agochukwu
Sue Anne Bell
Jade Burns



Antoinette Coe
Margaret Greenwood-Ericksen
Calista Harbaugh
Cornelius Jamison
Alan (Taylor) Kelley



Cathryn Lapedis
Sarah Shubeck
Daphna Stroumsa
Brian Stagg
Mary Vance

Expanding Collaborations with Michigan Department of Health and Human Services



Launched
June 2014

\$8.2M over
6 years

New Projects



Launched
October 2016

\$2.7M over
2 years

**Section 298
Behavioral-Physical Health
Integration Network**

Launched
November 2017

\$1.3M over
3 years

**Knowledge-to-Treatment
Optimization Program**

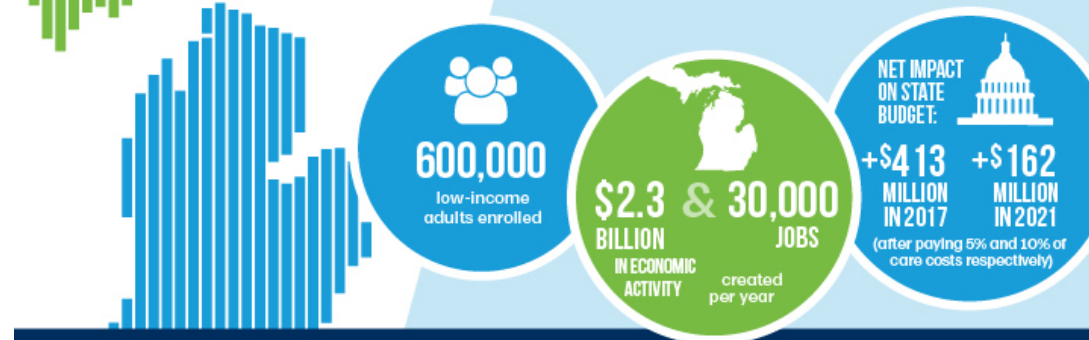
Launching
Early 2018

\$5.8M over
2 years



\$18 Million total over 6 years

ECONOMIC IMPACT OF MICHIGAN'S MEDICAID EXPANSION



Ayanian et al. NEJM. Jan. 2017

M INSTITUTE FOR HEALTHCARE POLICY & INNOVATION
UNIVERSITY OF MICHIGAN

How did Michigan's Medicaid expansion affect uncompensated care?

	2013	2015
EXPENSES <i>percent of hospital budgets spent on writing off cost of unpaid care</i>	5.2%	2.9%
SAVINGS <i>amount absorbed post-expansion</i>	\$627M	\$327.1M

Data from 88 hospitals across Michigan
Source: 2015 Report on Uncompensated Care and Insurance Rates

WWW.IHPI.UMICH.EDU

M INSTITUTE FOR HEALTHCARE POLICY & INNOVATION
UNIVERSITY OF MICHIGAN

How did Michigan's Medicaid expansion affect the health of low-income people and their ability to work?



WWW.IHPI.UMICH.EDU

M INSTITUTE FOR HEALTHCARE POLICY & INNOVATION
UNIVERSITY OF MICHIGAN

M | NATIONAL POLL ON HEALTHY AGING UNIVERSITY OF MICHIGAN



Director:
Preeti Malani,
M.D.



Co-Director:
Sarah Clark,
M.P.H.



Co-Director:
Erica Solway,
Ph.D.

Sponsored by



Directed by





Dental Care at Midlife: Unmet Needs, Uncertain Future

Keeping teeth healthy involves a combination of good oral hygiene (e.g., brushing and flossing) and routine preventive dental care (e.g., professional cleaning) with prompt attention to dental problems before they become severe. While researchers have studied among the 50-64 age group, the National Poll on Healthy Aging asked a national sample of adults age 50-80 about their dental care experiences.



Dementia Caregivers: Juggling, Delaying, and Looking Forward

Family caregivers play a vital role in providing support to older adults living with dementia and other cognitive impairments. This report focuses on unpaid dementia caregivers, family and friends who help people with memory problems manage health issues and provide personal care. The University of Michigan National Poll on Healthy Aging asked a national sample of adults age 50-80 about their experiences as dementia caregivers.



Drug Interactions: How to Avoid Them

Older people often have more health problems and take more medications than younger people. As a result, older adults are at increased risk of harmful interactions between different medications. The University of Michigan National Poll on Healthy Aging asked a national sample of older adults age 50-80 about their experiences and beliefs related to prescription medications and drug interactions.



Doctors and Pharmacists: An Underused Resource to Manage Drug Costs for Older Adults

The majority of US adults age 50 and older take prescription drugs to treat or prevent health problems. For many, the cost of these medications poses a financial burden. Older adults are encouraged to work with their doctors to identify ways to help reduce the cost associated with their prescription drugs. However, the extent to which patients actively seek and receive assistance from their health care providers around prescription drug costs is unclear. This task becomes more complex when patients are taking more medications and have multiple doctors involved in their care. The University of Michigan National Poll on Healthy Aging asked a national sample of older adults age 50-80 about their experiences related to prescription drugs and prescription drug costs.

Prescription Drug Management Complexity

Nearly two-thirds of older adults (63%) reported taking two or more prescription drugs with one in six (16%) taking six or more. Most older adults (69%) reported visiting two or more doctors during the past year.

Prescription drug management complexity can be determined by the number of prescription drugs and doctors involved in the patient's care. One in five respondents (19%) had "high complexity" of drug management with six or more prescriptions and multiple doctors; another 47% were categorized as "moderate complexity" with between two and five prescriptions and multiple doctors.



Trouble sleeping? Don't assume it's a normal part of aging

Good sleep can help maintain optimal health, but for many older adults getting enough restful sleep can be a challenge. Poor sleep has been linked to depression, memory difficulties, and an increased risk of falls and accidents. The University of Michigan National Poll on Healthy Aging asked a national sample of adults age 65-80 about their sleep patterns, use of sleep medications, and whether they discussed sleep-related concerns with their doctor.

In a typical week, nearly half of older adults (46%) reported that they regularly have trouble falling asleep: 32% on 1-2 nights a week and 15% on three or more nights. Older adults who described their health as fair or poor were more likely to report trouble falling asleep.

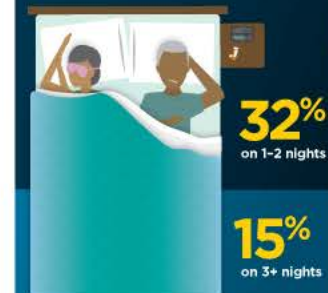
Having to use the bathroom (50%), worry/stress (25%), and pain (23%) were among the common reasons cited for trouble sleeping. But 41% said they were not sure why that had trouble sleeping.

Over a third of older adults (36%) reported using some type of medication to help with sleep including prescription sleep medications, over-the-counter (OTC) medications promoted as night-time formulations, herbal/natural sleep aids (like melatonin) or prescription pain medications. Use of at least one of these medications was reported by 14% of older adults for regular use and 23% for occasional use.

Among older adults having trouble falling asleep on three or more nights a week, 60% used some type of medication to help with sleep either regularly (31%) or on occasion (29%).



Trouble Falling Asleep in a Typical Week Among Adults Age 65-80 (nights/week)



Flu Vaccine for Nursing Home Staff and Residents

Older adults are at increased risk of complications from influenza (flu), and many older Americans live in nursing homes or assisted living facilities. Although annual flu vaccination is recommended for older adults as well as for all health care personnel, vaccination policies are inconsistent across health care settings including nursing homes. In October 2017, we asked a national sample of adults age 50-80 about vaccination requirements for nursing homes and assisted living facilities (referred to here as nursing homes).

Most older adults indicated that nursing homes should *definitely* require flu vaccine for medical staff (73%) and non-medical staff (71%), or *possibly* require flu vaccine (18% medical and 20% non-medical staff). Less than ten percent felt nursing homes should not require flu vaccine for medical (9%) or non-medical staff (9%).

In comparison, 61% of respondents indicated that nursing homes should *definitely* require flu vaccine for residents, while 27% felt they *possibly* should require and 12% felt they should not require flu vaccine for residents.

Only 25% of older adults indicated that nursing homes should *definitely* require flu vaccine for visitors to the facility, while 45% felt they *possibly* should require and 30% felt they should not require flu vaccine for visitors.

Older adults had varying levels of support for different strategies to promote flu vaccination among staff of nursing homes. The strongest support was for providing flu vaccine to staff for free, onsite at the facility (83% support). Most respondents said they would support a policy to not allow unvaccinated staff to come to work if they were sick (82% support). There was less support for mandating that all staff get flu vaccine in order to keep their job (55% support) or giving bonus pay to staff who get flu vaccine (47% support).



Flu Vaccine Requirements for Nursing Homes

Percentage of adults age 50-80 who reported flu vaccine should be "definitely required" for various groups:





September 2017

HEALTHYAGINGPOLL.ORG

Dental Care at Midlife: Unmet Needs, Uncertain Future

Keeping teeth healthy involves a combination of good oral hygiene (e.g., brushing and flossing) and routine prevent...



November 2017

HEALTHYAGINGPOLL.ORG

Dementia Caregivers: Juggling, Delaying, and Looking Forward

Family caregivers play a vital role in providing support to older adults living with dementia and...



December 2017

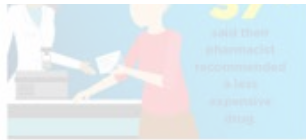
HEALTHYAGINGPOLL.ORG

Drug Interactions: How to Avoid Them

Older people often have more health problems and take more medications than younger people. As a result, older adults are at increased risk of harmful interactions between different medications. The University of Michigan National Poll on Healthy Aging asked a national sample of older adults to use 10/10/17



and doctors involved in the patient's care. One in five respondents (19%) had "high complexity" of drug management with six or more prescriptions and multiple doctors; another 47% were categorized as "moderate complexity" with between two and five prescriptions and multiple doctors.



Sponsored by **AARP** and **MICHIGAN MEDICINE UNIVERSITY OF MICHIGAN**

Directed by **MICHIGAN MEDICINE UNIVERSITY OF MICHIGAN**

sleep aids (like melatonin or prescription pain medications). Use of a least one of these medications was reported by 14% of older adults for regular use and 23% for occasional use. Among older adults having trouble falling asleep on three or more nights a week, 60% used some type of medication to help with sleep, either regularly (37%) or on occasion (23%).



Sponsored by **AARP** and **MICHIGAN MEDICINE UNIVERSITY OF MICHIGAN**

Directed by **MICHIGAN MEDICINE UNIVERSITY OF MICHIGAN**

Under adults said varying levels of support for different strategies to promote flu vaccination among staff of nursing homes. The strongest support was for providing flu vaccine to staff for free, onsite at the facility (93% support). Most respondents said they would support a policy to not allow unvaccinated staff to come to work if they were sick (82% support). There was less support for mandating that all staff get flu vaccine in order to keep their job (55% support) or giving bonus pay to staff who get flu vaccine (47% support).



Sponsored by **AARP** and **MICHIGAN MEDICINE UNIVERSITY OF MICHIGAN**

Directed by **MICHIGAN MEDICINE UNIVERSITY OF MICHIGAN**



Michigan Program on Value Enhancement

Joining research expertise with clinical needs



Director:
Eve Kerr,
M.D.



Co-Director:
Anne Sales,
PhD. R.N.



Co-Director:
Scott Flanders,
M.D.

Detroit Community Health Worker Initiative

- Partnering with:
 - Medicaid health plans
 - Detroit Health Department
 - Community organizations
- Awarded U-M Poverty Solutions planning grant
- Also funded by:
 - Michigan Medicaid Match
 - Blue Cross Blue Shield Foundation of Michigan
 - Ralph C. Wilson Foundation



Project Director:
Michele Heisler,
M.D.



Co-Director:
Adrienne
Lapidus, Ph.D.



Co-Director:
Edie Kieffer,
Ph.D., M.P.H.



OPEN

OPIOID PRESCRIBING ENGAGEMENT NETWORK

Engaging patients.
Educating providers.
Protecting communities.



Co-Director:
Michael
Englesbe, M.D.



Co-Director:
Chad Brummett,
M.D.



Co-Director:
Jennifer Waljee,
M.D.

University of Michigan Precision Health Initiative



October 3

Officially announced by
President Schlissel

Opioids

first use case

Changed from

**“Precision Medicine”
to “Precision Health”**

as recommended by IHPI
National Advisory Board

Co-Directors: Goncalo Abecasis, D.Phil., Sachin Kheterpal, M.D., Eric Michielssen, Ph.D.
Managing Director: Rachel Dawson, J.D.

POLICY

IMPACT INITIATIVES (PI²) *New in 2018!*

GOAL

Create a more coordinated and strategic approach to matching IHPI expertise with emerging health policy issues.

POLICY

IMPACT INITIATIVES (PI²) FEATURES

- Policy Advisory Committee
- Nominations to federal advisory committees
- Key events
- Policy “sprints”
 - White papers, comment & research letters
 - Blog postings (*Health Affairs*, etc.)
 - Evidence-based commentaries (*JAMA & NEJM*)



Eileen
Kostanecki,
M.A.



Lena Chen,
M.D.

SUPPORTING OUR MEMBERS



Strategic Initiatives & Programs

- Framework for launching initiatives
- 5 new initiatives in FY'17
- CSP transitions to IHPI
- New grant development services
- R01 Bootcamp, K Award Workshops & Study Sections fueling funding success
- New skill building and fellowships & internships for summer students



Trish Meyer
Manager



Erica Solway
Senior Project Manager,
HMP; Assoc. Director, NPHA



Molly Martin
Program Coordinator,
IHPI CSP



Brittany Weatherwax
Program Coordinator,
IHPI CSP



Elyse Aurbach
Program Development
Associate



Emma Steppe
Associate Project
Manager



Wendy Lombard
Grant Developer



Jason Wolfe
Project Manager



Erin Beathard
Medicaid Policy Analyst



Matthias Kirch
Analyst

Data & Methods Hub



Patrick Brady
Manager



Tanima Banerjee
Statistician



Neil Kamdar
Lead Statistician



Paul Lin
Statistician



Dawn Russell
Senior Assistant



Phyllis
Wright-Slaughter
Senior Data Architect

- Data requests up 40%
- 4x increase in abstract and paper submissions
- 67% increase in consults
- CSCAR office hours at IHPI
- Online forum for growing community of analysts supporting members
- More research seminars offered
- Flexible cloud computing available

Impact Accelerator



**Christina
Camilli-Whisenhunt**
Communications
Manager



Kara Gavin
Research & Policy
Media Relations
Manager

- Strengthening brand
- New website (2018)
- Supporting new initiatives
- New communication channels & types of content

- Number of newsletter readers well above industry average
- In-house graphic design
- Serving as a model for communications excellence



Eileen Kostanecki
Director of Government
& External Relations



Lauren Hutchens
Senior Communications
Specialist



Mark Lubin
Communications
Specialist



Stacy Trosell
Events & Member
Engagement Specialist



**Emily (Zarack)
Smith**
Multimedia Designer

- 100+ interactions w/faculty
- 350+ interactions w/elected officials, external stakeholders
- Policy Impact Initiatives

Institute Leadership & Administration



New Opportunities for Development



Patrick Cliff
Associate Director of
Development (Jan '17)

- Presentations to local/regional gift officers
- Philanthropy training for 28 members
- Key donor visits
- Gupta family initiatives: exploring new programs to support faculty engagement with policy-makers and the media
- Fundraising mailing
- Florida Seminars (2/14)
- Phoenix M-Talks (2/27)
- Seattle regional dinner (3/1)
- Vail & Chicago TBD

Meeting work challenges...



and #HealthPolicyHalloween challenges

Our headquarters
has its



**UPS AND
DOWNS.**



**WE HAVE YOU COVERED
FROM HEAD TO TOE.**



*New for 2018...
IHPI gloves!*



OPPORTUNITIES FOR
ENGAGEMENT
IN STRATEGIC INITIATIVES





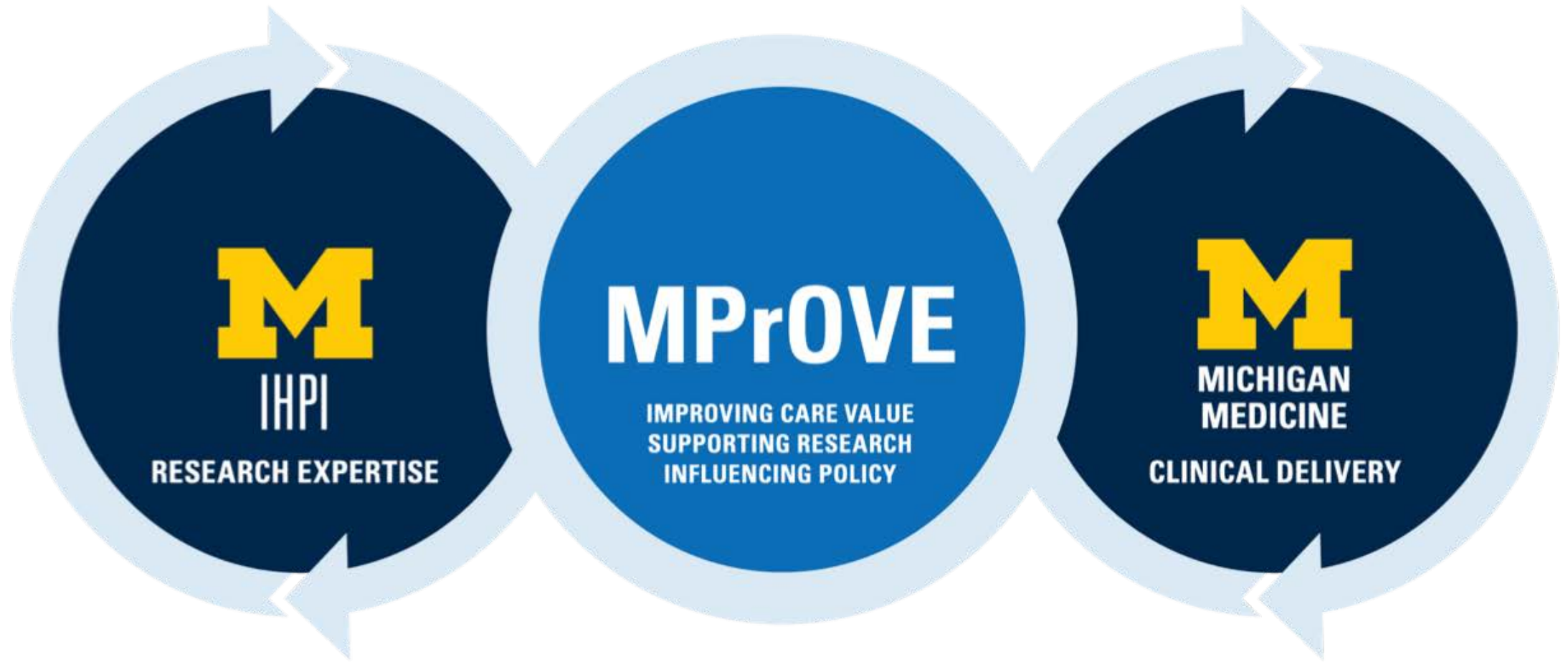
MPrOVE

IHPI MEMBER FORUM
JANUARY 24, 2018

MPrOVE Mission.

MPrOVE seeks to **prove and improve the value of care at Michigan Medicine** by bringing together leaders in research, design, management and clinical care to support transformative approaches in evaluation and implementation **through the lens of appropriateness.**

Our Goal.



MPrOVE Faculty.



Eve A. Kerr, M.D., MPH
MPrOVE Director



Anne Sales, Ph.D., R.N.
MPrOVE Co-Director

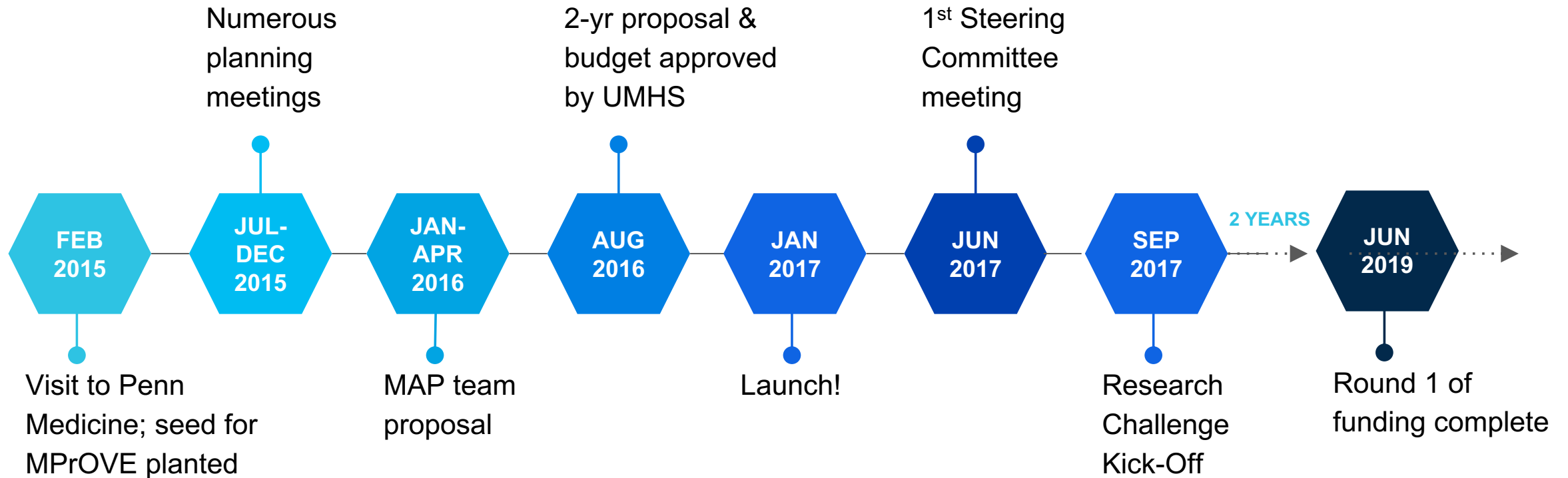


Scott Flanders, M.D.
MPrOVE Co-Director

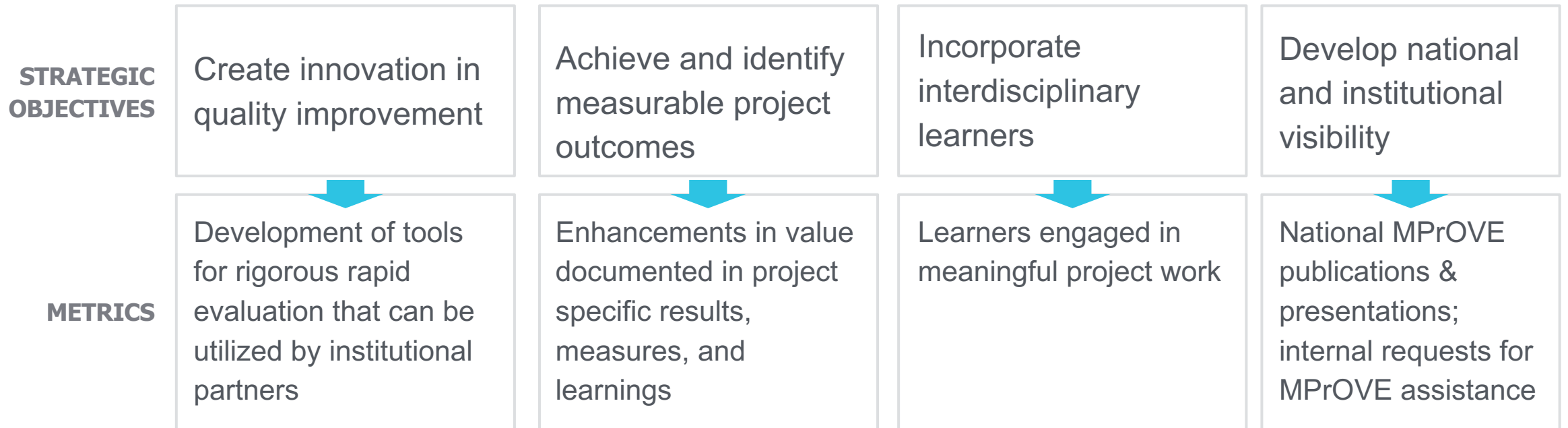


Chris Petrilli, M.D.
Value Innovator

MPrOVE Timeline.



MPrOVE Strategic Objectives.



MPrOVE Projects Launched in 2017.

PROJECT	GOAL
VITAMIN D	To understand the effect of a system wide initiative to decrease the inappropriate use of vitamin D tests for outpatients
CHEST PAIN	To model the impact of the proposed chest pain pathway on 1) patient flows and primary outcomes 2) time from ED admission to eventual outcome and 3) costs
DAILY LABS (CBC)	Test approaches for decreasing the inappropriate use of daily complete blood count (CBC) testing for inpatients
LAB TESTING RIGHT CARE REPORT	To assess the appropriateness of laboratory testing At Michigan Medicine.
LOW BACK PAIN IMAGING APPROPRIATENESS	To complete the assessment of imaging appropriateness at Michigan Medicine.
RESEARCH INNOVATION CHALLENGE	To encourage the interdisciplinary, collaborative research projects that decrease low value care & to support large-scale grant submission for external funding.

Research Innovation Challenge

OPERATIONAL PARTNER : IHPI AND FAST FORWARD MEDICAL INNOVATION

GOAL

IMPROVE- KICK START

To encourage the interdisciplinary, collaborative research projects that decrease low value care & to support large-scale grant submission for external funding.

STRATEGIC OBJECTIVES

Identify and achieve measurable project outcomes at Michigan Medicine

Develop national and institutional visibility

Incorporate interdisciplinary learners

Planning Grant:

Improving the Science of Telemedicine Delivery at Michigan Medicine and Beyond

Chad Ellimoottil, MD, MS (PI)

John Piette, PhD, MS (Co-PI)

Lawrence An, MD (Co-PI)

Jodyn Platt, MPH, PhD (Co-I)

Brian Denton, PhD (Co-I)

Andy Ryan, PhD (Co-I)

James M. Dupree, MD, MPH (Co-I)

Tom Buchmueller, PhD (Co-I)

Molly White, MPH (Co-I)

Aalap Doshi, MS (Co-I)

**Representing 3 schools/colleges*

Seed Funding:

Leveraging a Virtual Learning Consortium, Predictive Analytics, and Systems Engineering to Reduce Access Delays in Ambulatory Specialty Care

Sameer D. Saini, MD, MS (PI)

Allen Flynn, (Co-I)

John Allen, MD, MBA (Co-I)

Karmel Shehadeh, (Data Analyst)

Amy Cohn, PhD (Co-I)

Darcy Saffar, MPH (Project

Jacob Kurlander, MD, MS (Co-I)

Manager/Qualitative Analyst)

Megan Adams, MD, JD (Co-I)

**Representing 2 schools/colleges*

HOW HAS MPrOVE ADDED VALUE SO FAR?



**Enhanced
intervention
designs**



**More informative
evaluations**



**Engagement of
learners and IHPI
faculty**



**New measures,
and measurement
approaches, of
appropriateness**



**Launch of Research
Innovation Challenge**



**Beginning national
visibility**

How to get involved?

Faculty

- Helping MPrOVE apply your innovative and health services research skills to challenging and multidisciplinary health system problems
- Partnership with MPrOVE when starting new QI or operational initiatives to enhance the design, innovation and / or evaluation.

Students

- Research assistance, statistical analyses, intervention design, report card design, predictive modeling etc.



NATIONAL POLL ON HEALTHY AGING
UNIVERSITY OF MICHIGAN



IHPI Member Forum

January 24, 2018

Sponsored by



Directed by



- Why the National Poll on Healthy Aging?
- Overview and Goals
- National Poll on Children's Health as a model
- Sponsorship (partnership)
 - AARP & Michigan Medicine Department of Communication
- What we've done so far...
- Where we go next...

Why Healthy Aging Matters?

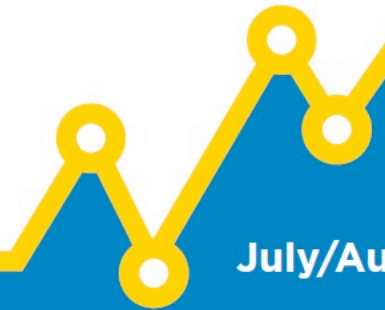
- 50+ population in the US, 108,729,506 (2014 Census projections)
- Median Household Income: \$56,710
- 13% of those 50-64 years do not have health insurance (2012-2013)
- 84.8% purchased prescription medications in past 30 days
- 33% have been in an emergency department in the past 3 years
- 53% have been to the dentist in the past year

Overview and Goals

- Develop, implement, and sustain a recurring, nationally representative household survey of U.S. adults
- Dissemination of Results—academic and non-academic channels
- Increasing visibility of IHPI and IHPI members

What we've done so far...

- Importance of AARP and Michigan Medicine partnerships
- Dissemination: academic and non-academic channels
- Engagement with media
- Engagement with policymakers (Health Affairs Blog)



July/August 2017

HEALTHYAGINGPOLL.ORG

Doctors and Pharmacists: An Underused Resource to Manage Drug Costs for Older Adults

The majority of US adults age 50 and older take prescription drugs to treat or prevent health problems. For many, the cost of these medications poses a financial burden. Older adults are encouraged to work with their doctors to identify ways to help reduce the cost associated with their prescription drugs. However, the extent to which patients actively seek and receive assistance from their health care providers around prescription drug costs is unclear. This task becomes more complex when patients are taking more medications and have multiple doctors involved in their care. The University of Michigan National Poll



Among respondents who
talked with their doctor about
prescription drug costs,

67%

Among respondents who talked with their doctor about prescription drug costs,

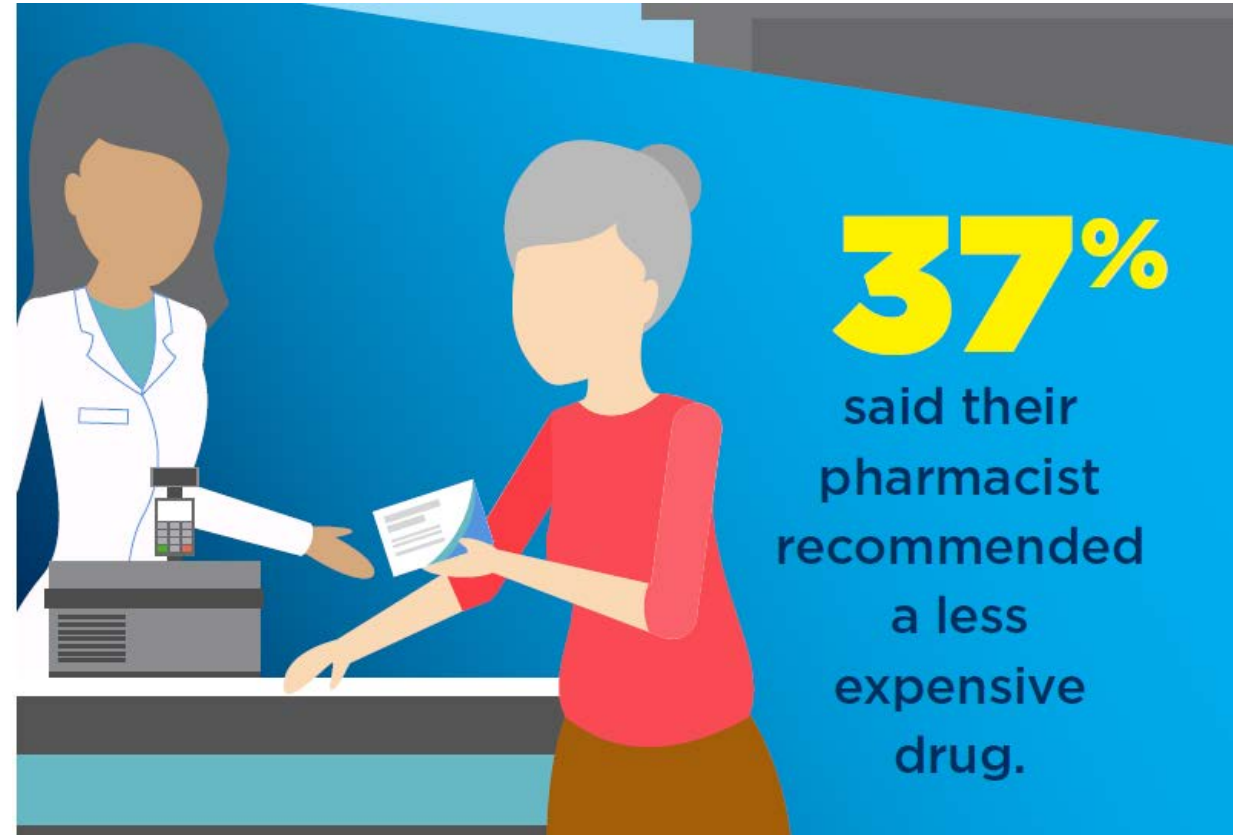
67%

said their doctor recommended a less expensive drug.



37%

said their pharmacist recommended a less expensive drug.



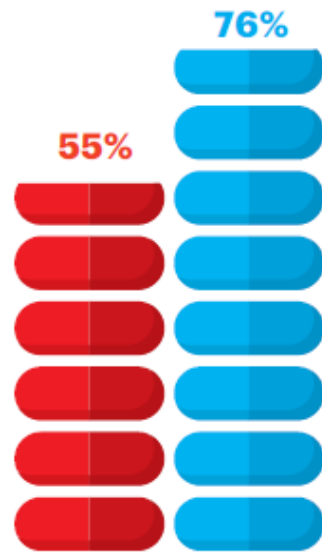
LET'S TALK

Doctors and patients need to communicate better about drug prices, new AARP-University of Michigan study suggests

AGES 50 TO 64

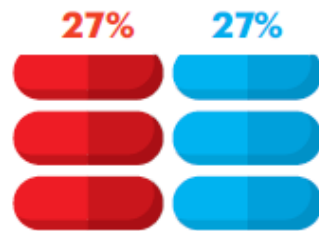
AGES 65 TO 80

Older Americans take a lot of medicine ...



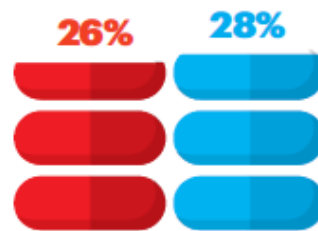
Percentage of Americans currently taking two or more prescription drugs

And costs can be a struggle ...



Percentage who say prescription drugs pose a financial burden

Yet few patients bring it up with their doctors ...



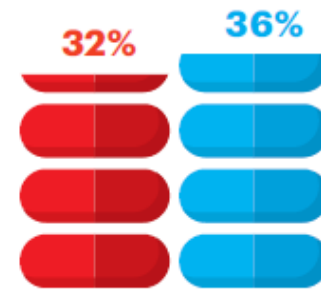
Percentage of medicine-takers who say they've talked about drug costs with their physicians in the past two years

Leaving many doctors in the dark ...



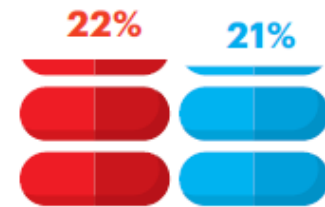
Percentage of medicine-takers who think their doctor is unaware of how much they pay for drugs

Only a few doctors offer a cheaper alternative ...



Percentage of medicine-takers whose doctors have recommended a lower-priced prescription drug in the past two years

And the same goes for pharmacists.



Percentage of medicine-takers who say a pharmacist has recommended a less-expensive prescription drug in the past two years



September 2017

HEALTHYAGINGPOLL.ORG

Dental Care at Midlife: Unmet Needs, Uncertain Future

Keeping teeth healthy involves a combination of good oral hygiene (e.g., brushing and flossing) and routine preventive dental care (e.g., professional cleaning) with prompt attention to dental problems before they become severe. While researchers have studied oral health and dental care utilization among those over age 65, less is known about the 50-64 age group and their approach to dental care. The University of Michigan National Poll on Healthy Aging asked a national sample



**Patterns of Dental Care Among
Adults Age 50-64**

Percentage of adults age 50–64 who are embarrassed about the condition of their teeth

21%

of Prevention-Focused Respondents



43%

of Inconsistent Prevention Respondents



63%

of Problem-Only Respondents





October 2017

HEALTHYAGINGPOLL.ORG

Trouble sleeping?

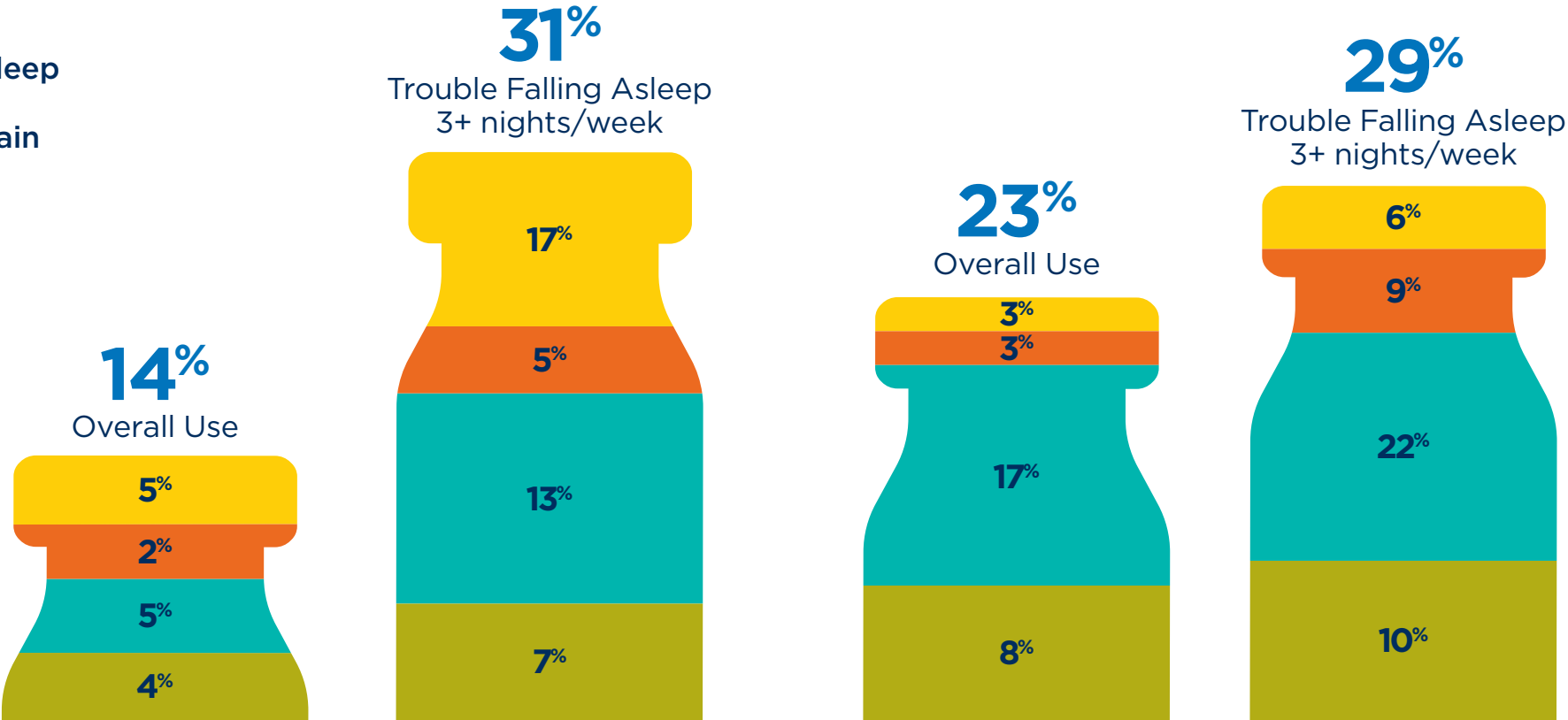
Don't assume it's a normal part of aging

Good sleep can help maintain optimal health, but for many older adults getting enough restful sleep can be a challenge. Poor sleep has been linked to depression, memory difficulties, and an increased risk of falls and accidents. The University of Michigan National Poll on Healthy Aging asked a national sample of adults age 65–80 about their sleep patterns, use of sleep medications, and whether they discussed sleep-related concerns with their doctor.



Use of Sleep Medications Among Adults Age 65–80

- Prescription Sleep
- Prescription Pain
- OTC
- Herbal



*Note: 11% reported taking more than one type of medication to help with sleep

REGULAR USE

OCCASIONAL USE



THE FLU AND NURSING HOMES

The University of Michigan's National Poll on Healthy Aging, which is cosponsored by AARP, asked nearly 2,000 people ages 50 to 80 what should be done to protect nursing home patients and assisted-living residents from the flu. What they said:

- ▶ 55 percent believed all staff members should get flu vaccinations or lose their jobs.
- ▶ 93 percent said that vaccinations should be made available at all nursing homes.

- ▶ 47 percent supported giving bonus pay to staff members who get a vaccination.
- ▶ 82 percent were in favor of banning sick employees who did not get a vaccination.

Where we go next...

- Partner with IHPI members for content expertise
- Send your ideas, questions to agingpoll@umich.edu
- Translating poll results into future policy and research
- Continuing to develop our relationship with AARP

Our Team...

- Preeti Malani, *Director*
- Erica Solway & Sarah Clark, *Associate Directors*
- Dianne Singer, *Production Manager*
- Matthias Kirch, *Data Analyst*
- Eileen Kostanecki, *Government and External Relations*
- Trish Meyer, Kara Gavin, Christina Camilli-Whisenhunt, Emily Smith, Mark Lubin, *Strategy and Communications*

NPHA Advisory Board

- John Ayanian
- Ken Langa
- Helen Levy
- Donovan Maust
- Renu Tipirneni
- Marita Titler

OPEN

The word "OPEN" is rendered in a large, bold, blue sans-serif font. The letter 'N' is uniquely designed, featuring a white silhouette of the United States map within its right vertical stroke.

OPIOID PRESCRIBING ENGAGEMENT NETWORK

The New York Times

Senate Approves Bill to Combat Opioid Addiction Crisis

Forbes

Obama Signs Opioid Legislation, Despite Funding Concerns

Los Angeles Times

'Doctor shopping' targeted in new law signed by Gov. Brown to curb epidemic of opioid overdose deaths

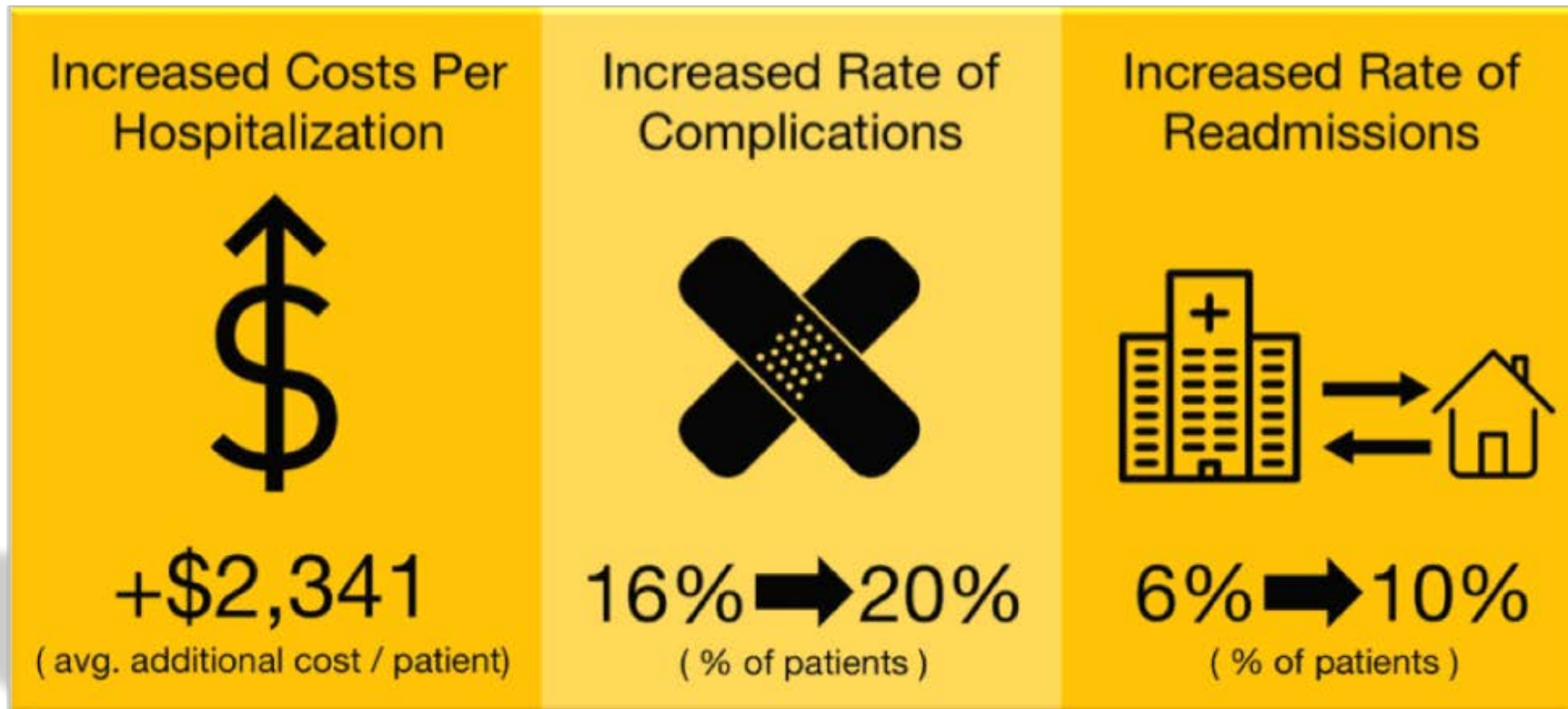
Detroit Free Press

Michigan Legislature crafts opioid bills to stem addiction

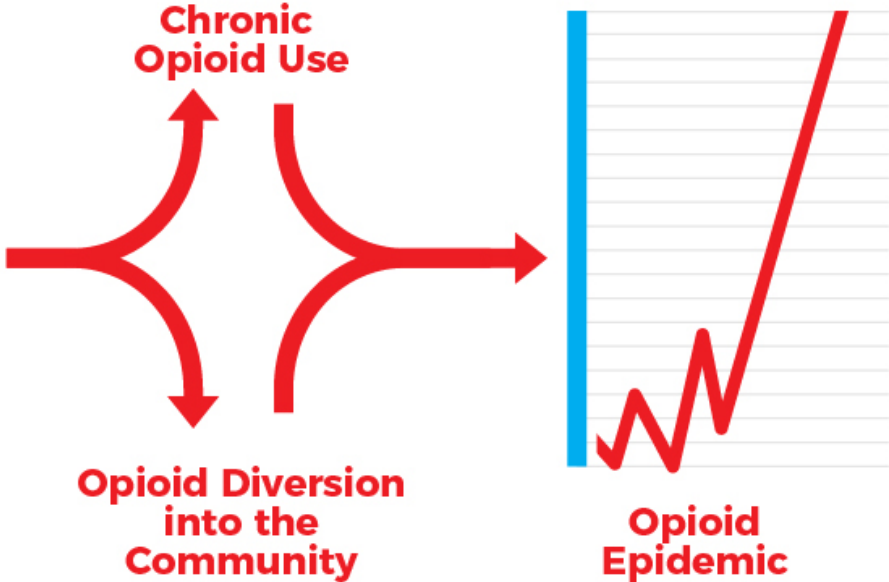
The Washington Post

Organ donation on the rise as fatal drug overdoses mount

Pre-Operative Opioid Use and Associated Outcomes after Major Abdominal Surgery



Preventing Chronic Opioid Use and Abuse Before it Starts



Current Strategic Efforts



National Institutes of Health
Turning Discovery Into Health



Michigan Department of Health & Human Services

M·TQIP





Blue Cross
Blue Shield
Blue Care Network
of Michigan



CENTERS FOR DISEASE
CONTROL AND PREVENTION



National Institutes of Health
Turning Discovery Into Health



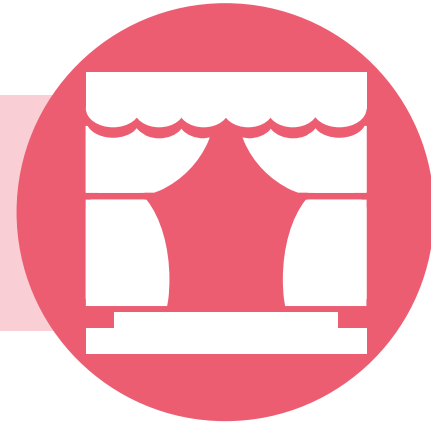
Community outreach



Informing policy and advocating



Making a show



Working with primary care providers



Educating students and fellows



Focusing on at risk populations



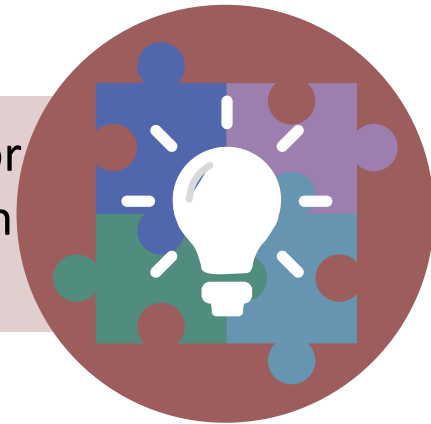
Designing payment incentives



Local quality improvement



Innovation for complex pain patients





EDUCATION & TRAINING WORKGROUP



Guiding Education, Training & Faculty Development



Caroline Richardson
Family Medicine
Chair, E&T workgroup



Patricia Abbott
Nursing



Lindsay Admon
Ob-Gyn



Karen Farris
Pharmacy



Amy Cohn
Engineering



Holly Jarman
Public Health



Lisa A. Prosser
Pediatrics



Andy Ryan
Public Health



Emma Steppe
IHPI Staff



Jason Wolfe
IHPI Staff

Education & Training Workgroup

Guiding IHPI's E&T Portfolio

**Monthly
IHPI
Research
Seminars**

**Residential
MOOC
Improving U.S.
Healthcare
System**

**K Mock
Study
Sections**

**HSR Summer
Internship
& Fellowship
Program**

**R01 Boot
Camp &
K Award
Workshops**

**Summer
Student Lunch
& Learn, Skill-
Building
Seminars**

**Path of
Excellence**

**K Mock
Study
Sections**

**R01 Boot
Camp & K
Award
Workshops**

Faculty Volunteers Help Lay Groundwork for Grant Success



MENTORS

K Writing
Workshop in
partnership
with MICHR



REVIEWERS

K Mock Study
Section in
partnership
with CHOP



COACHES

R01 Boot
Camp in
partnership with
Medical School



HSR Summer
Internship
& Fellowship
Program

Summer
Student Lunch
& Learn, Skill-
Building
Seminars

Vibrant, Inter-professional Community for Students

IHPI/HSR Fellowship and Internship Program facilitating student/mentor interdisciplinary research relationships.

Propose a summer 2018 project!

Skill-Building Seminars: interactive & focused on building professional skills which cross disciplines.

Share your expertise!

Lunch-and-Learn: students learn about the educational and professional experiences of a range of IHPI members.

Share your professional journey!



Residential MOOC Improving U.S. Healthcare System

Since 2016,

1000+

students have
participated in
groups led by
61 IHPI
members.

Open to medical, dental, pharmacy, nursing, public health and LS&A students. On-line and in-person facilitated sessions.

Facilitate a student session this fall:

- 90-minute group sessions, with 15-20 students per session.
- Focus on inter-professional student discussion and engagement around the Choosing Healthcare All Together (CHAT) exercise.

Medical School Health Policy Path of Excellence



Susan Goold
MD, MHSA, MA
Professor, Internal
Medicine



Amir Ghaferi
MD, MS
Assistant Professor,
General Surgery



Jeff Kullgren
MD, MS, MPH
Assistant Professor,
Internal Medicine



Deb Levine
MD, MPH
Assistant Professor,
Internal Medicine



Michelle Macy
MD, MS
Assistant Professor,
Pediatric Emergency
Medicine

60
medical
students
in prior
classes

+

18
new
with this
year's
cohort

QUESTIONS



THANK YOU to our Faculty Volunteers!

93
members

have volunteered to lead or facilitate an IHPI education/training program over the past three years!

Your generosity and commitment ensures the success of these programs.

Those who volunteered at least once during FY15-FY17 will receive a letter of recognition from John Ayanian and Caroline Richardson. Sent to Chair and Division Chief (or Dean if recipient is a chair).

Recognizing Outstanding Volunteers

24
members

have volunteered for multiple programs over three years

**Note: Activities for which a member receives compensation for their IHPI role are not eligible for volunteer "credit."*

Receiving awards based on level of volunteer commitment:



The background features a collage of circular icons in blue, yellow, and green. These icons include symbols for a hand, a group of people, a person at a whiteboard, a heart, a speech bubble, and various human figures, representing themes of education, training, and community.

2018
PLATINUM
AWARD

**IHPI Education and
Training Workgroup**

Justin B. Dimick, M.D.





2018 GOLD
AWARD

**IHPI Education and
Training Workgroup**

**Amy
Bohnert,
Ph.D.**



**Claire
Kalpakjian,
Ph.D.**





2018 SILVER
AWARD

**IHPI Education and
Training Workgroup**

Patti Abbott, Ph.D.

Lindsay Admon, M.D.

Jim Burke, M.D.

Noelle Carlozzi, Ph.D.

Amy Cohn, Ph.D.

Mark Fendrick, M.D.

Michael Gaies, M.D.

Amir Ghaferi, M.D.

Jennifer Griggs, M.D.

Megan Haymart, M.D.

Richard Hirth, Ph.D.

Helen Kales, M.D.

Keith Kocher, M.D.

Anna Kratz, Ph.D.

Jeff Kullgren, M.D.

Donovan Maust, M.D.

Anne Sales, Ph.D.

Lesli Skolarus, M.D.

Ted Skolarus, M.D.

Emily Somers, Ph.D.

Lauren Wallner, Ph.D.



2019
VOLUNTEER
AWARD

**Want to
volunteer
next year?**

Watch for our email messages,
and/or contact Jason Wolfe for more
information about education and
training volunteer opportunities.



IHPI 2017

Impact Accelerator AWARD

Helen Levy, Ph.D.

Research Professor, ISR

Co-Chair, IHPI Impact Accelerator

Awards Committee



IHPI 2017

Impact Accelerator AWARD

- Recognizes members who demonstrate a commitment to impacting policy or practice

Winner awarded \$1,000 to faculty account & have a research brief written by IHPI communications staff

- Criteria for selection:
 - Use of high quality research and a discernable policy impact
 - Level of engagement with policy makers to address mission of IHPI
 - Endorsement from “end-user” of research



IHPI 2017

Impact Accelerator AWARD

- Nominations due in Fall 2018
- Application
 - Nomination form (self nominations accepted and encouraged)
 - One page summary of research and the impact on policy and/or practice
 - Letter of support from an end-user of the research



IHPI 2017

Impact Accelerator AWARD



Lisa Prosser, Ph.D., M.S.

2017 IHPI Impact Award Winner

Center Director, Child Health Evaluation
and Research (CHEAR) Center

Professor, Department of Pediatrics
and Communicable Diseases

Professor, Department of Health
Management and Policy

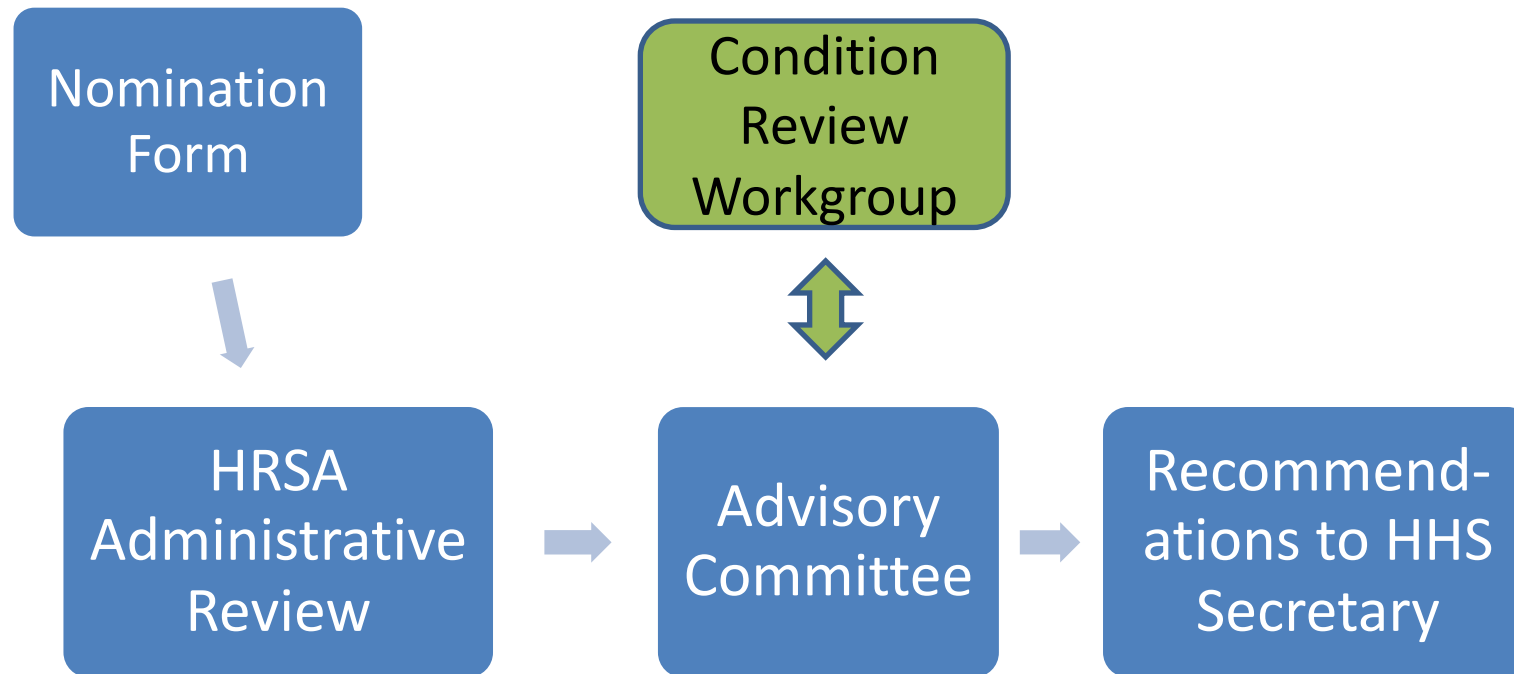
- Conducted cost-effectiveness analysis of the new shingles vaccine and results informed decision on recommendation for influenza vaccination.
- Decision analytic modeling to project screening outcomes for 4 conditions for newborns.
- 3 of the 4 conditions considered have been added to the Recommended Uniform Screening Panel.

Using Decision Modeling to Inform Newborn Screening Policy Decisions

Lisa A. Prosser, PhD, MS
Professor

January 24, 2018

Process for Adding New Conditions



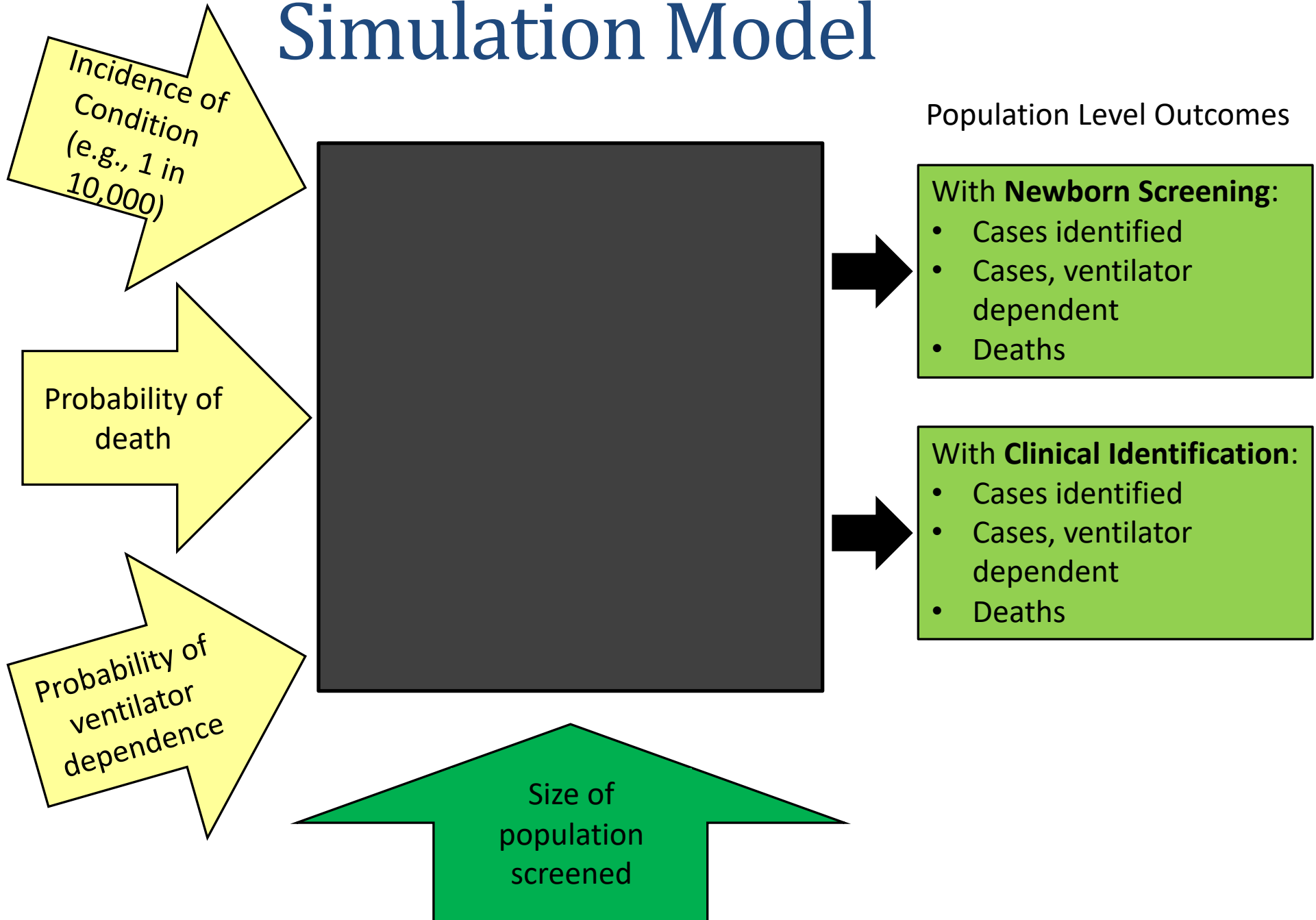
Evidence Review & Synthesis

- RCT
- Cohort
- Case-control
- Observational/Descriptive
- Expert Opinion

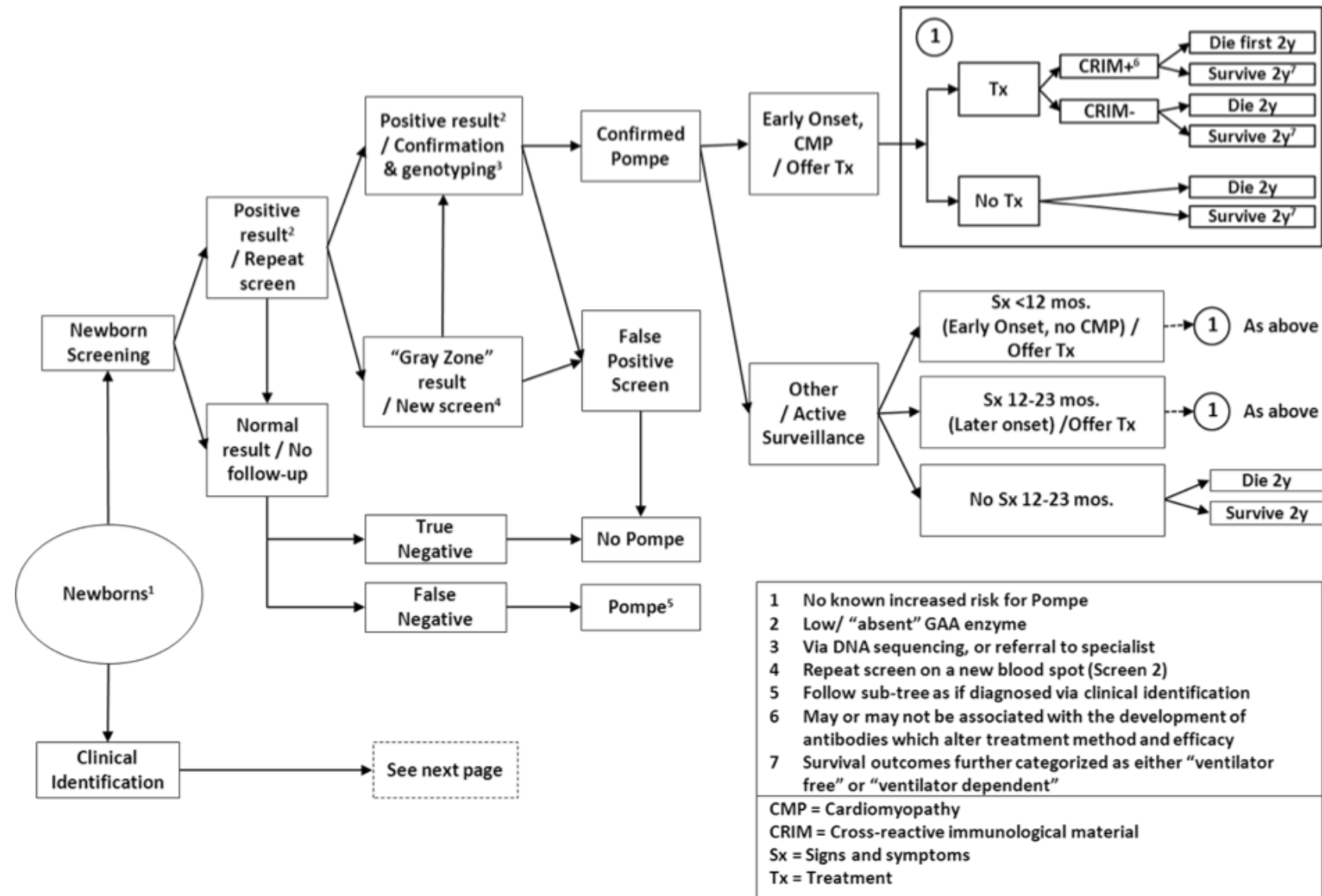
Available Evidence

-
- Cohort
- Case-control
- Observational/Descriptive
- **Expert Opinion**

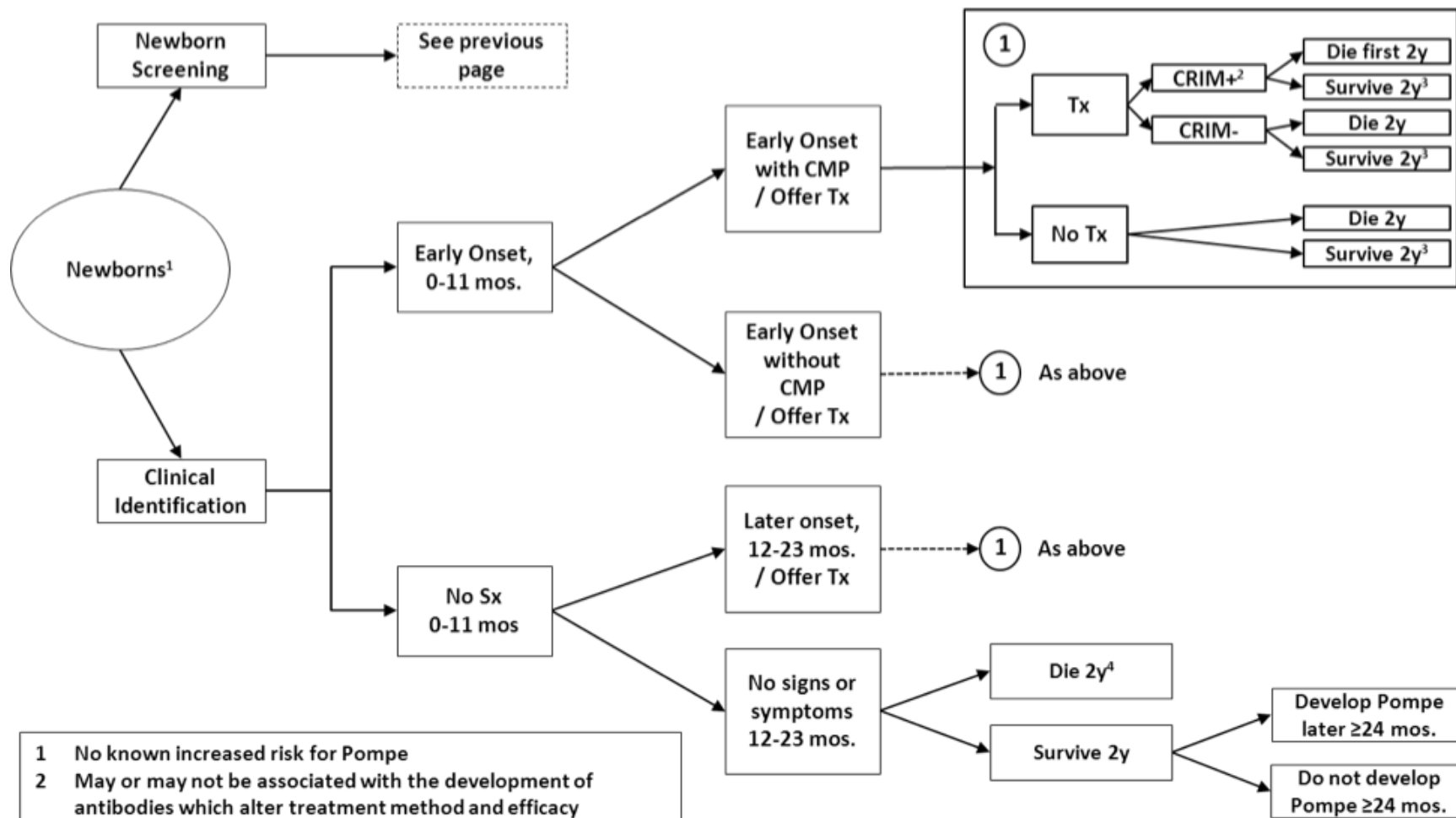
Simulation Model



Expert Panel 3 Model Schematic, Part 1



Expert Panel 3 Model Schematic, Part 2



1 No known increased risk for Pompe
 2 May or may not be associated with the development of antibodies which alter treatment method and efficacy
 3 Survival outcomes further characterized as either “ventilator free” or “ventilator dependent”
 4 Non-Pompe related mortality
 CMP = Cardiomyopathy
 CRIM = Cross-reactive immunological material
 Sx = Signs and symptoms
 Tx = Treatment

Role for Decision Analysis in Condition Review Process

- Validated approach to evidence synthesis
- Incorporation of modeling into the evidence review process:
 - Simple models: estimate ranges using simulation modeling
 - Health outcomes: population-level; ranges
 - **No cost-effectiveness analysis**
- Goal is to project health benefits and potential harms at the population level (4 million newborns screened annually)

Acknowledgments

- **U-M Research Team:** Angela, Acham Gebremariam, Anton Avancena, Dietta Chihade
- **ACHDNC Condition Review Workgroup**
- **Expert Panel Participants**
- **Funding Source: HRSA**

HACKATHON INFO,
HEADSHOT,
POSTERS
& PARTY

